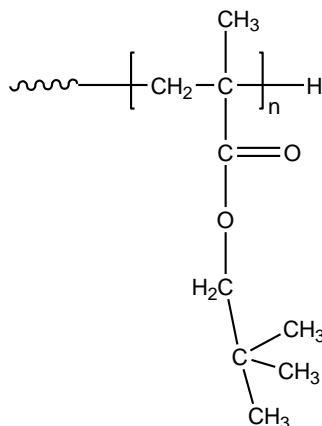


Sample Name: Poly (neopentyl methacrylate)

Sample #: P40946-NPMA

**Structure:**



**Composition:**

$M_n \times 10^3$ (g/mol)	$M_w/M_n$
84.0	1.44

**Synthesis procedure:**

The polymer was synthesized by anionic polymerization process.

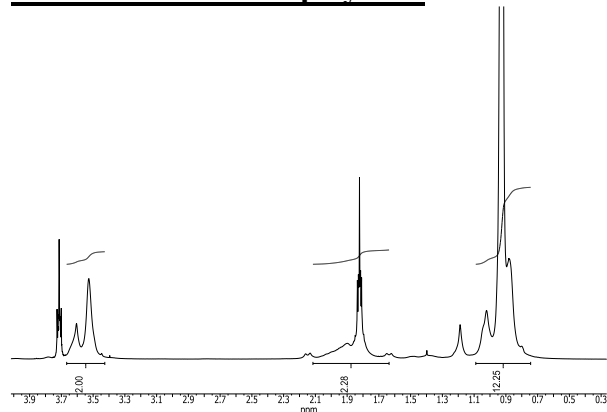
**Characterization:**

The molecular weight and polydispersity index ( $M_w/M_n$ ) of poly (neopentyl methacrylate) were obtained by size exclusion chromatography (SEC).

**Solubility:**

Poly (neopentyl methacrylate) is soluble in THF, chloroform, toluene, and dioxane. The polymer precipitates from hexanes, methanol, and ethanol.

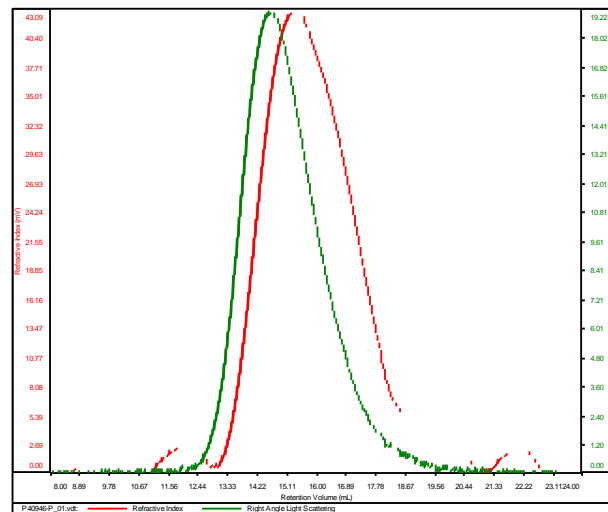
**<sup>1</sup>H NMR of the homopolymer:**



**SEC elugram of the homopolymer:**

P40946

Conc	8.0531
dn/dc	0.0650
Solvent	DMF w 0.023M LiBr
Flow Rate	0.7000
Method	PS80k_2018-02-15-0000.vcm



Sample	$M_n$	$M_w$	$M_p$	$M_w/M_n$	IV
P40946-P_01.vdt	83,934	120,547	115,178	1.436	0.2590