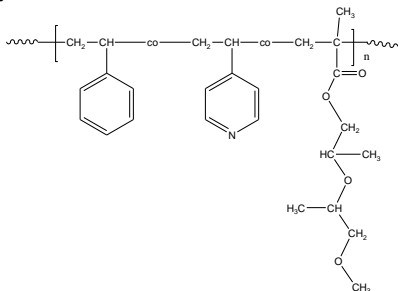


Sample Name: Random Copolymer Poly (styrene-co-4-vinylpyridine –co-propylene glycol methyl ether methacrylate)

Sample #: P41051-S4VPPGMAran

Structure:



Composition:

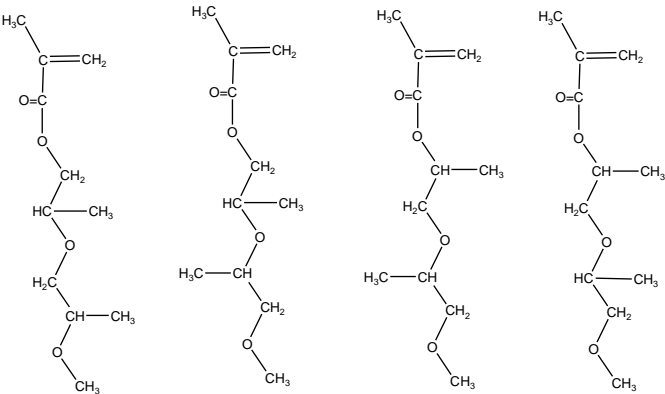
Mn × 10 ³	PDI
45.5	1.5
S:4VP: PGMA mole ratio	11:62:27
Mn of Poly(propylene glycol) methacrylate	261

Characterization:

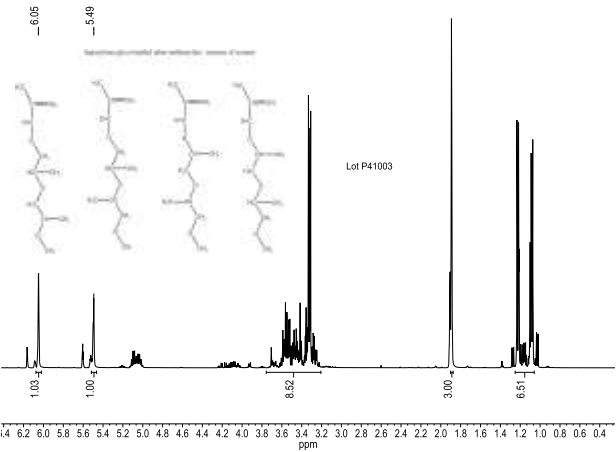
Polymer analyzed by size exclusion chromatography (SEC) to obtain the molecular weight and polydispersity index (PDI). The final block copolymer composition was calculated from ¹H-NMR spectroscopy.

Note: Propylene glycol methacrylate is Dipropylene glycolmethacrylate (dimer): mixture of isomers

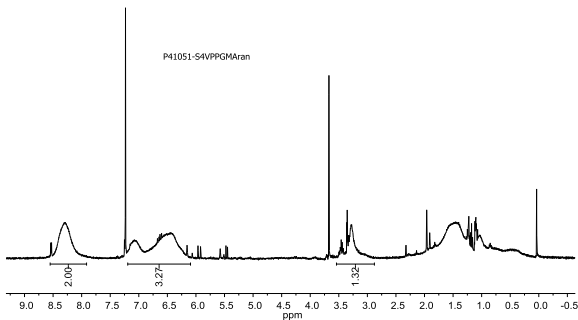
dipropylene glycol methyl ether methacrylate : mixture of isomers



HNMR of dipropylene glycolmethacrylate (dimer) monomer used in this synthesis (Mixture of isomers):



¹HNMR spectrum of the polymer:



SEC elugram of the copolymer:

