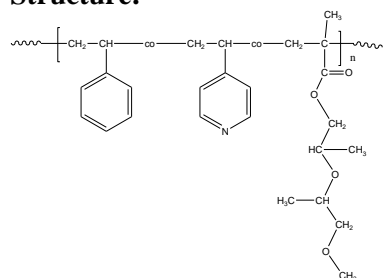


Sample Name: Random Copolymer Poly (styrene-co-4-vinylpyridine –co-propylene glycol methyl ether methacrylate)

Sample #: P41040-S4VPPGMAran

Structure:



Composition:

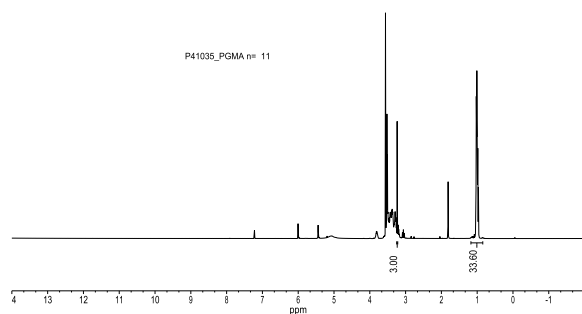
$M_n \times 10^{-3}$	PDI
35.0	1.25
S:4VP: PGMA mole ratio	8:72:20
M_n of Poly(propylene glycol) methacrylate	738

propylene glycol methacrylate bearing 11 repeat units of propylene glycol

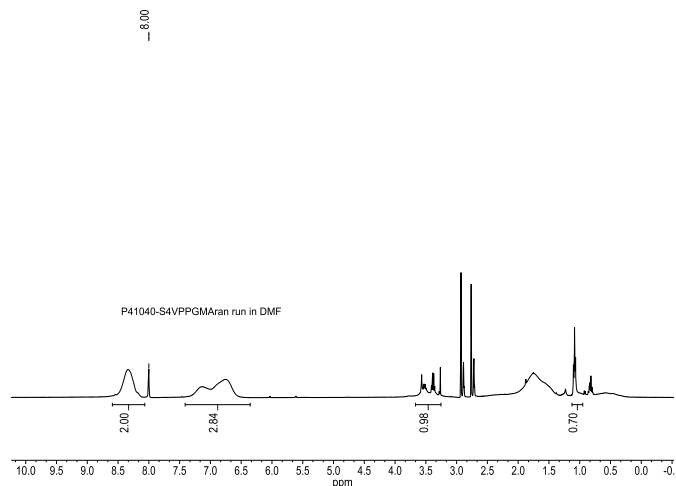
Characterization:

Polymer analyzed by size exclusion chromatography (SEC) to obtain the molecular weight and polydispersity index (PDI). The final block copolymer composition was calculated from $^1\text{H-NMR}$ spectroscopy.

HNMR of macromonomer of propylene glycolmethacrylate used in this synthesis Lot # P41035:

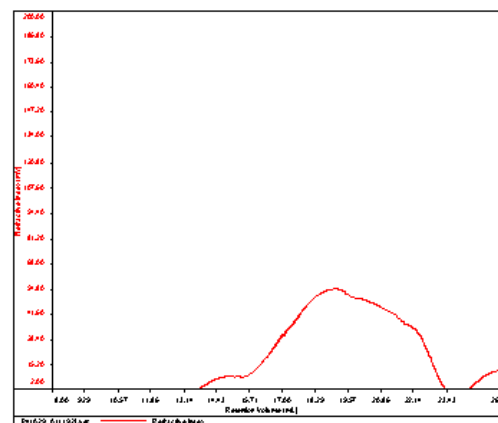


$^1\text{HNMR}$ spectrum of the polymer:



SEC elugram of the copolymer:
S4VPPGMAran

Conc	7.2042
dn/dc	0.1650
Solvent	DMF w/ 0.023M LiBr
Flow Rate	0.7000
Method	PS803_20190305-0000.urom



Sample	M_n	M_w	M_p	M_w/M_n	IV
1922 uL	34,264	42,534	33,103	1.238	0.1450