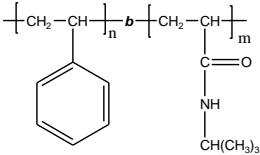


Sample Name: Poly (styrene-b-N-isopropyl acrylamide)

Sample #: P16339-SNIPAM

Structure:



Composition:

|                                   |                               |
|-----------------------------------|-------------------------------|
| Mn x 10 <sup>3</sup><br>S-b-NIPAM | Mw/Mn (PDI)                   |
| 81.0-b-1.0                        | 1.12                          |
| For PS block:                     | T <sub>g</sub> : 105°C        |
| For SNIPAM block                  | T <sub>g</sub> : Not distinct |
| * composition by<br>HNMR          | ** Disribution by SEC         |

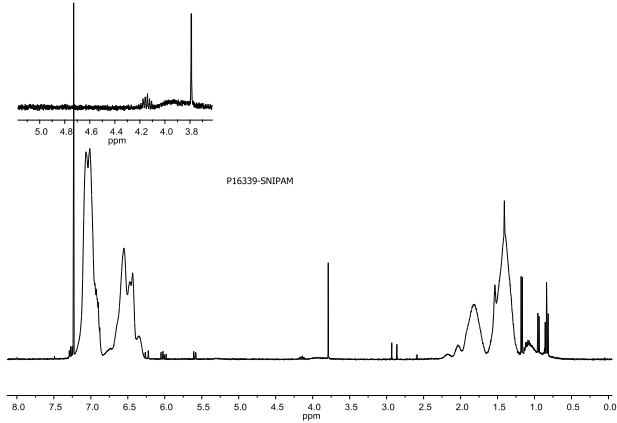
Synthesis Procedure:

Poly (styrene-b-N-isopropyl acrylamide) is prepared by RAFT process where styrene polymerized first followed by addition of NIPAM monomer

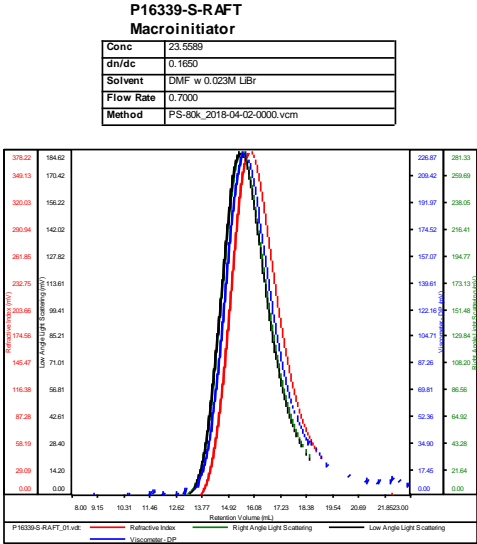
Characterization:

The product was characterized by size exclusion chromatography (SEC) and <sup>1</sup>H NMR.

H-NMR spectrum of the Polymer:

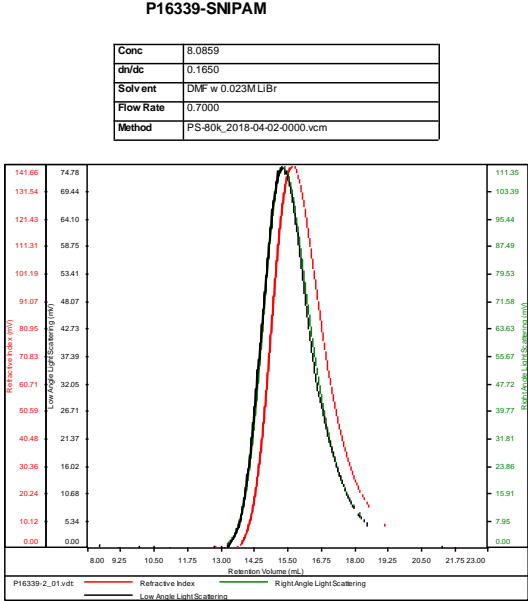


SEC elugram of the PS macroinitiator:



| Sample               | Mn     | Mw     | Mp     | Mw/Mn | IV     |
|----------------------|--------|--------|--------|-------|--------|
| P16339-S-RAFT_01.vdt | 81,340 | 89,972 | 84,311 | 1.106 | 0.3033 |

SEC elugram of the Sample:



| Sample          | Mn     | Mw     | Mp     | Mw/Mn | IV     |
|-----------------|--------|--------|--------|-------|--------|
| P16339-2_01.vdt | 82,024 | 91,886 | 88,390 | 1.120 | 0.2616 |