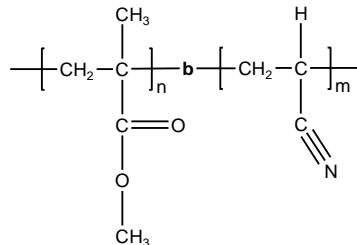


Sample Name:
Poly (Methylmethacrylate-b-Acrylonitrile)

Sample #: **P41152-MMAACN**
PMMA block rich in Syndiotactic fraction

Structure:



Composition:

| Mn × 10 ³ MMA-b-ACN | Mw/Mn (PDI) |
|-----------------------------------|-------------|
| 37.0-b-29.0 | 2.0 |

Color : ivory

Synthesis Procedure:

The polymer is prepared by anionic polymerization process.

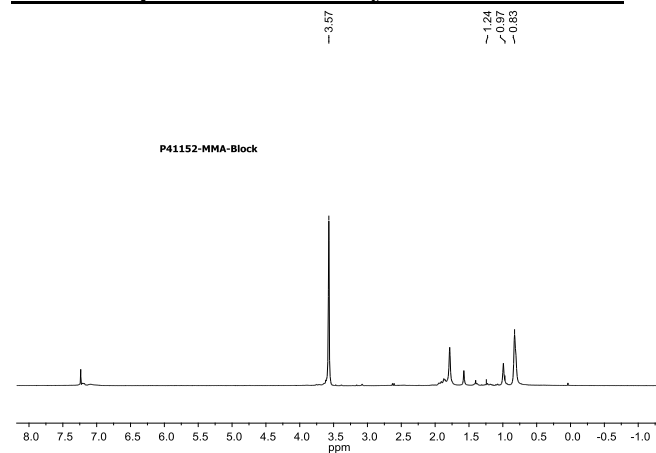
Characterization:

The polymer was characterized by size exclusion chromatography (SEC) in DMF and ¹H NMR.

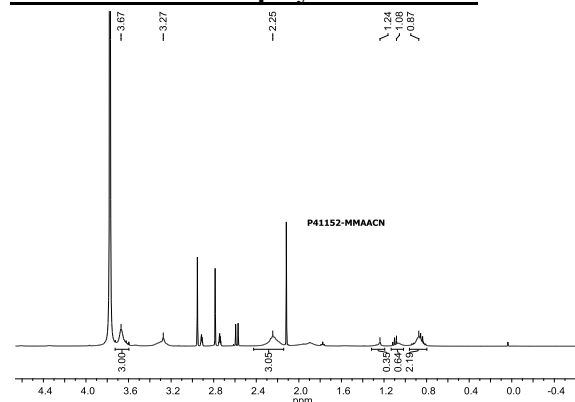
Solubility:

Polymer is soluble in THF, Chloroform, DMF, and precipitated in methanol and hexanes.

¹H NMR spectrum of the Polymer PMMA block:



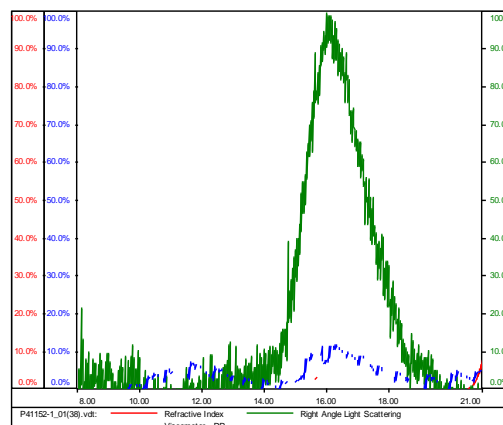
¹H NMR of Block Copolymer in DMF:



SEC elugram of the MMA block:

P41152-1

| | |
|-----------|----------------------------|
| Conc | 1.3853 |
| dn/dc | 0.0650 |
| Solvent | DMF w 0.023M LiBr |
| Flow Rate | 0.7000 |
| Method | PS-80k_2018-04-02-0000.vcm |

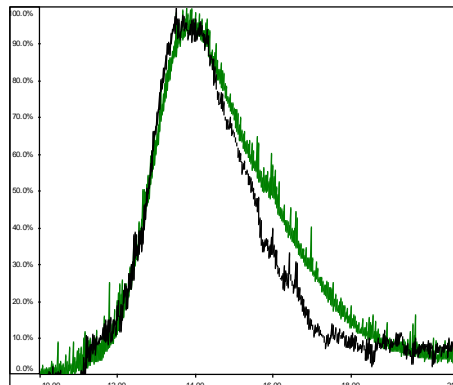


| Sample | Mn | Mw | Mp | Mw/Mn | IV |
|---------------------|--------|--------|--------|-------|--------|
| P41152-1_01(38).vdt | 36,808 | 73,731 | 39,165 | 2.003 | 0.1939 |

SEC elugram of the Sample:

P41152-MMAACN

| | |
|-----------|---------------------------|
| Conc | 1.8013 |
| dn/dc | 0.0820 |
| Solvent | DMF w 0.023M LiBr |
| Flow Rate | 0.7000 |
| Method | PS99k_2018-05-30-0000.vcm |



| Sample | Mn | Mw | Mp | Mw/Mn | IV |
|---------------------|--------|---------|--------|-------|--------|
| P41152-2_01(57).vdt | 60,344 | 120,783 | 44,181 | 2.002 | 1.5602 |