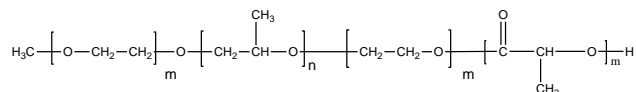


Sample Name: Monomethoxy Poly (ethylene oxide-b-propylene oxide -b- ethylene oxide)-b-lactide) tetrablock copolymer α - Monomethoxy- ω -hydroxy terminal ends

Sample #: P41663-EOPOEOLA

Structure:



Composition:

| Mn x 10 ³ | PDI |
|------------------------|------|
| 4.2-b-1.2-b-2.3-b-10.0 | 1.10 |
| Dp:95-b-23-b-41-138 | |

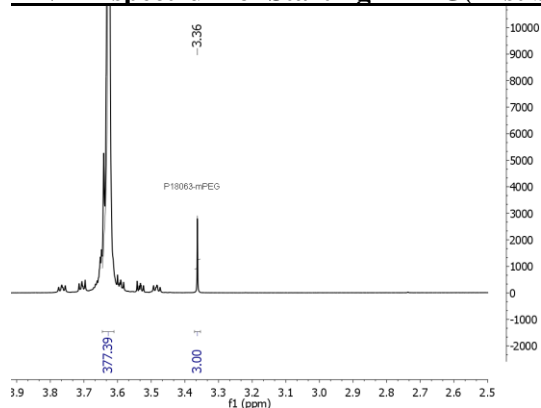
Synthesis Procedure:

The polymer was synthesized by anionic polymerization process.

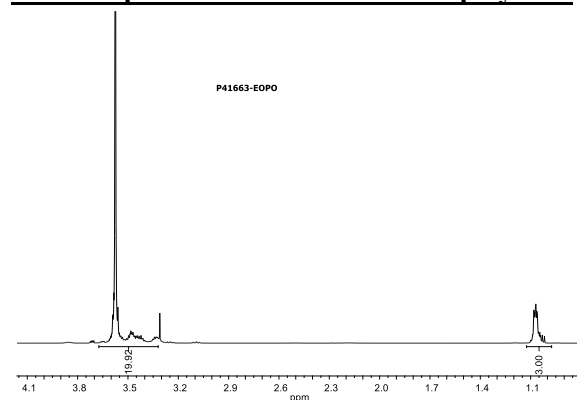
Characterization:

The product was characterized by size exclusion chromatography (SEC) and ¹H NMR.

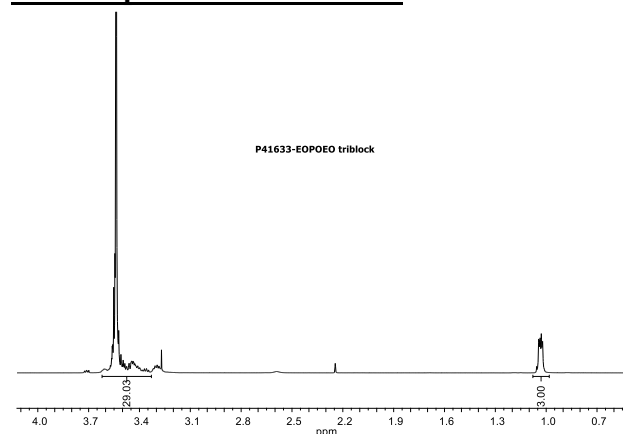
HNMR spectrum of Starting mPEG(first block):



HNMR spectrum of EOPO diblock polymer:



HNMR spectrum of EOPOEO:



HNMR spectrum of EOPOEOLA tetrablock:

