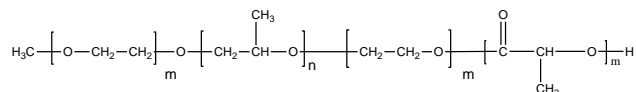


**Sample Name:** Monomethoxy Poly (ethylene oxide-b-propylene oxide -b- ethylene oxide)-b-lactide) tetrablock copolymer  $\alpha$ - Monomethoxy- $\omega$ -hydroxy terminal ends

**Sample #:** P41663A-EOPOEOLA

**Structure:**



**Composition:**

Mn x 10 <sup>3</sup> EO-b-PO-b-EO-b-LA	PDI
4.2-b-1.2-b-2.3-b-13.5	1.20
Dp:95-b-23-b-41-138	

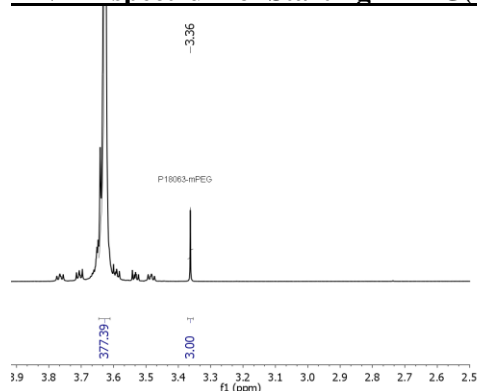
**Synthesis Procedure:**

The polymer was synthesized by anionic polymerization process.

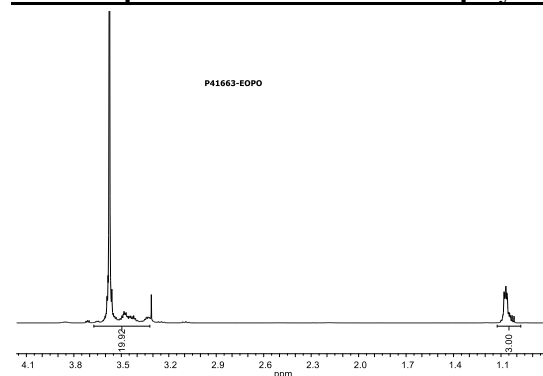
**Characterization:**

The product was characterized by size exclusion chromatography (SEC) and <sup>1</sup>H NMR.

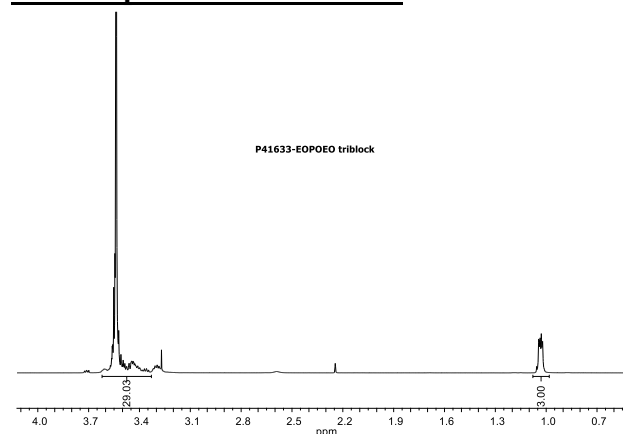
**HNMR spectrum of Starting mPEG(first block):**



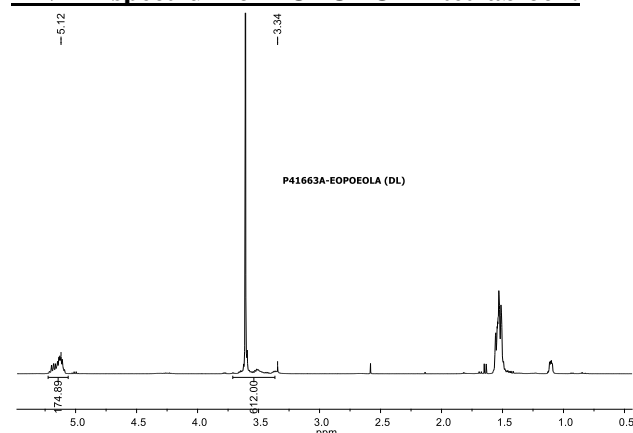
**HNMR spectrum of EOPO diblock polymer:**



**HNMR spectrum of EOPOEO:**

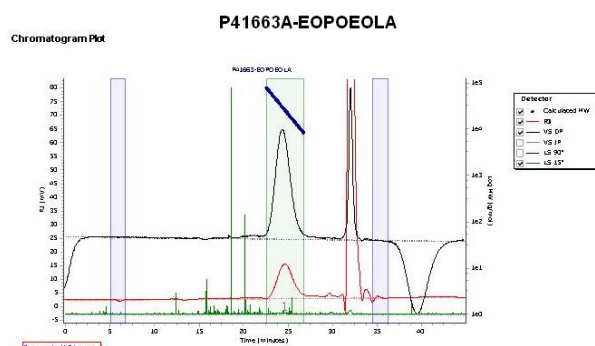


**HNMR spectrum of EOPOEOLA tetrablock:**



**SEC elugram of the Sample:**

Agilent GPC/SEC Software



Molecular Weight Averages						
Peak	Mp (g/mol)	Mn (g/mol)	Mw (g/mol)	Mz (g/mol)	Mz+1 (g/mol)	Mv (g/mol)
Peak 1	25714	22278	26803	31748	36769	30037