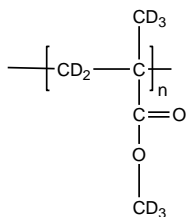


Sample Name: Poly (methyl methacrylate)-d₈

Sample #: P16405-dPMMA

Structure:



Composition:

Mn x 10 ³	344.5
PDI	1.7
T _g (°C)	126.3

Synthesis Procedure:

Deuterated poly(methyl methacrylate)-d₈ is obtained by controlled RAFT polymerization process.

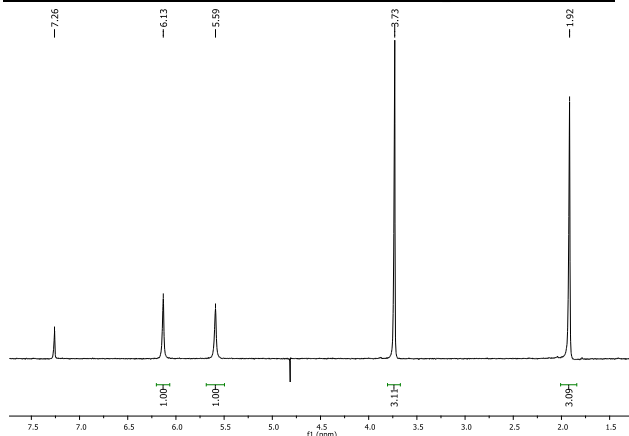
Characterization:

The molecular weight and polydispersity index (PDI) are obtained by size exclusion chromatography (SEC) in DMF. SEC analysis was performed on a Varian liquid chromatograph equipped with refractive and light scattering detectors. Three SEC columns from Supelco (G6000-4000-2000 HXL) were used with triple detectors from Viscotek Co.

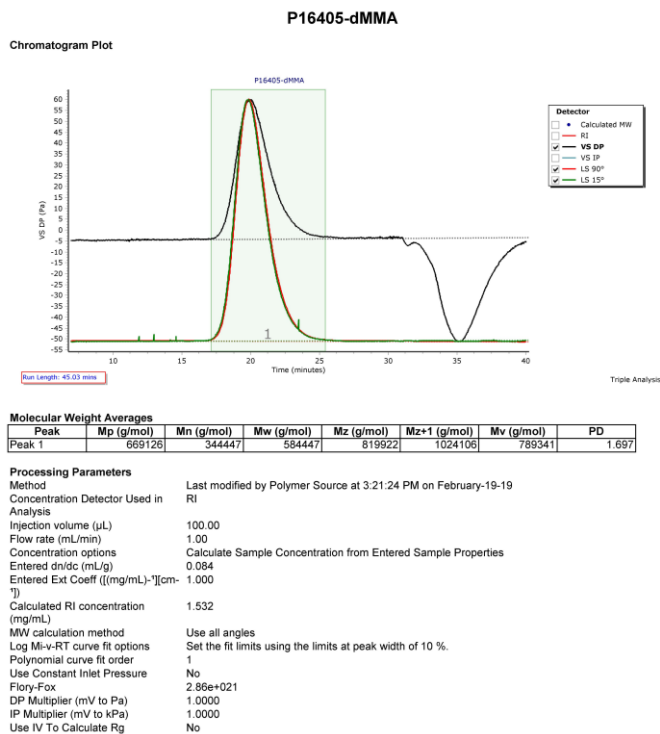
Solubility:

Deuterated poly (methyl methacrylate)-d₈ is soluble in THF, CHCl₃, toluene and dioxane. The polymer precipitates from hexanes, methanol and ethanol.

²D NMR of MMA-d₈ monomer (D purity>99%):



SEC elugram of Homopolymer:



DSC curve of Homopolymer:

