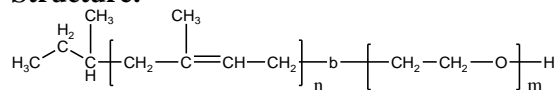


Sample Name:
Poly(1,4-isoprene)-b-poly (ethylene oxide)

Sample #: **P42000-IPEO**

Structure:



Composition:

Mn x 10 ³ PIP-b-EO	Mw/Mn (PDI)
56.0-b-4.5	1.06

Synthesis Procedure:

Poly(Isoprene 1,4 addition or 1,2 addition)-b-ethylene oxide) can be prepared by anionic polymerization process.

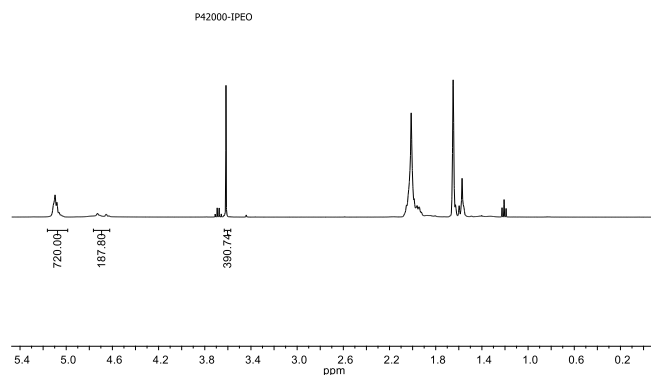
Characterization:

The product was characterized by size exclusion chromatography (SEC) and ¹H NMR.

Solubility:

Poly(isoprene-b-ethylene oxide) is soluble in THF, CHCl₃, and toluene. The polymer has variable solubility in hexane, methanol, ethanol and water depending on its composition.

¹H NMR spectrum of the sample:

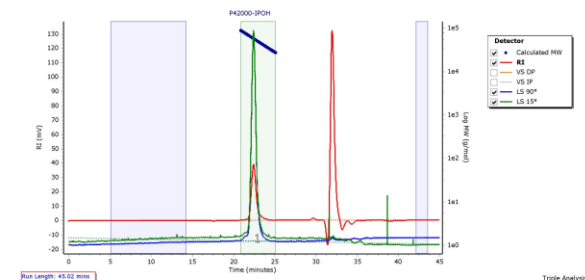


SEC profile of the block copolymer:

Agilent GPC/SEC Software

P42000-IPOH

Chromatogram Plot



Molecular Weight Averages

Peak	Mp (g/mol)	Mn (g/mol)	Mw (g/mol)	Mz (g/mol)	Mz+1 (g/mol)	Mv (g/mol)	PD
Peak 1	57871	55725	56469	57140	57763	57062	1.013

Composition from HNMR