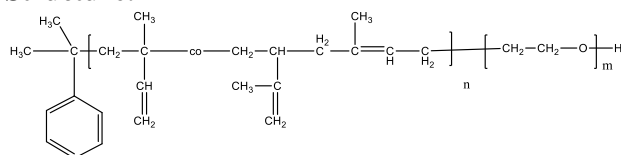


**Sample Name:** Poly(isoprene-b-ethylene oxide)

**Sample #:** P42029-IPEO

(polyisoprene block rich in 1,2- & 3,4-microstructure)

**Structure:**



**Composition:**

$M_n \times 10^3$ PIP-b-EO	$M_w/M_n$ (PDI)
50.0-b-13.0	1.02

**Synthesis Procedure:**

The polymer was synthesized by anionic process using Cumyl Potassium.

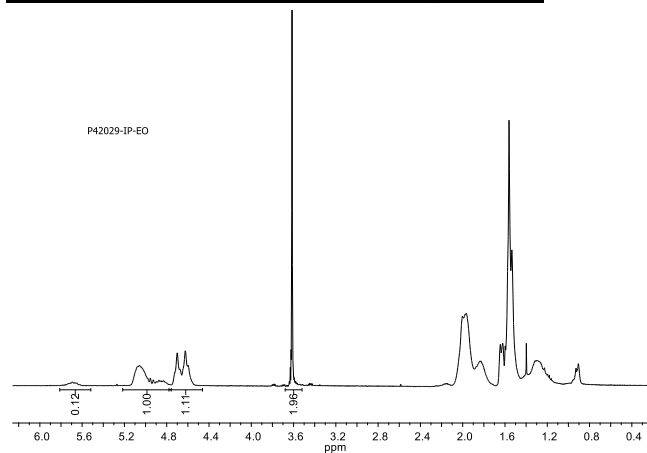
**Characterization:**

The product was characterized by size exclusion chromatography (SEC) and  $^1\text{H}$  NMR.

**Solubility:**

Poly (isoprene-b-ethylene oxide) is soluble in THF and  $\text{CHCl}_3$ .

**$^1\text{H}$  NMR spectrum of the block copolymer:**



**SEC elugram of the block copolymer:**

Agilent GPC/SEC Software

