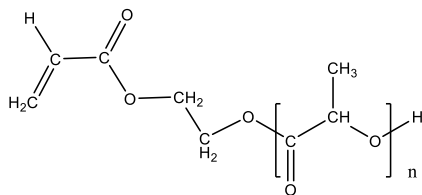


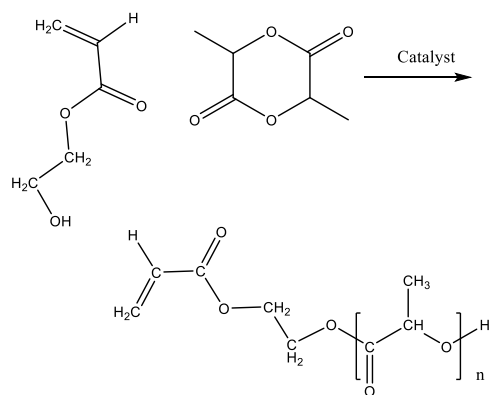
Poly(DL-lactide), α -acryloyloxy terminated

Structure:



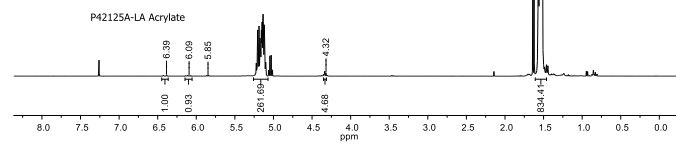
$M_n \times 10^3$	PDI
18.5	1.15

The scheme of the reaction is illustrated below:

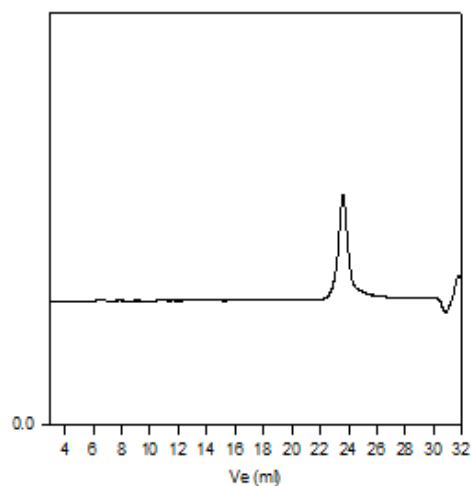


PDLLA is soluble in CHCl_3 , Acetone, THF and it is insoluble in ethanol, hexane. It Precipitated from Acetone or CHCl_3 into EtOH or hexane/EtOH.

PDLLAs were analyzed by size exclusion chromatography (SEC) to obtain the polydispersity index (PDI). M_n was estimated by NMR. Percentage of vinyl functionality was determined from the integrals ratio of the peaks at 2.90 and 5.9, 6.1 and 6.4 ppm.



P42125-LA-ACr



Mn: 18,500 Mw: 22,200 Mw/Mn 1.15