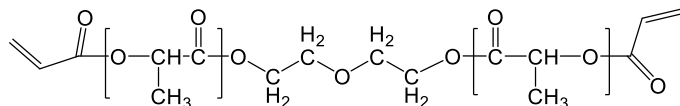


Sample Name: Poly (DL-lactide), α,ω -bis(acryloyloxy) terminated

Sample #: P42126F3-LA-2Acr

Structure:

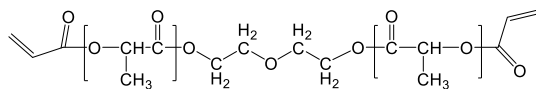
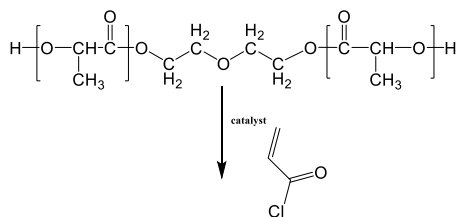


Composition:

$M_n \times 10^3$	PDI
10.0	1.14

Synthetic Procedure:

The scheme of the reaction is illustrated below:



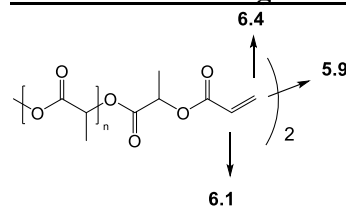
Solubility:

Polymer is soluble in CHCl_3 , Acetone, THF, insoluble in ethanol, hexane. Precipitated from Acetone or CHCl_3 into EtOH or hexane/EtOH.

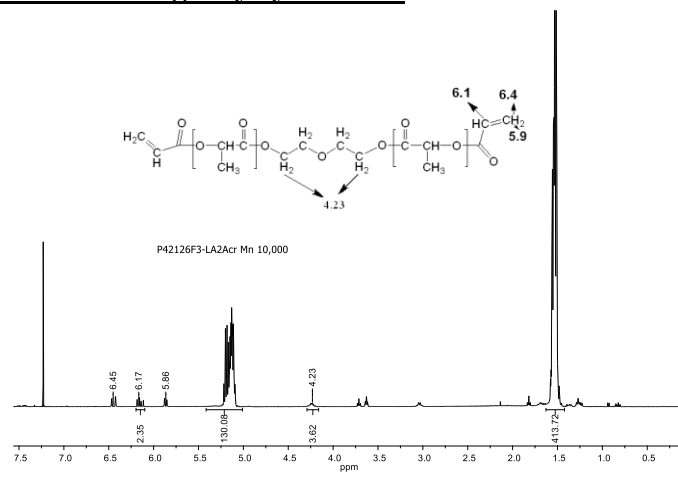
Characterization:

The product was characterized by size exclusion chromatography (SEC) to obtain the polydispersity index (PDI). M_n was estimated by NMR. Percentage of vinyl functionality was determined from the integrals ratio of the peaks at 2.90 and 5.9, 6.1 and 6.4 ppm.

Chemical shifts assignments



PDLLA bearing acryloyl moieties



SEC profile of the polymer:

P42126F3-PLA-2OH(DLfrom)

