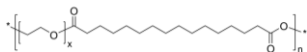


**Sample Name:** Poly(PEG-hexadeca-di-oate); polyester based on poly(ethylene glycol) and hexadecanedioic acid

**Sample #:** P42382A-EGHDDA

**Structure:**



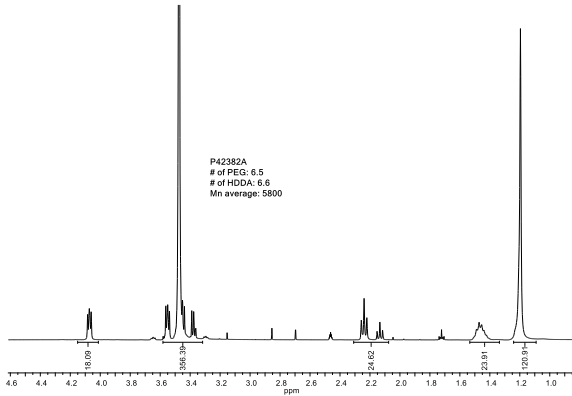
**Composition:**

$M_n \times 10^3$	Mw/Mn
2.9	1.6
# of PEG average units 3.2	
# of Diacid average units 3.6	
Physical appearance White color honey like at room temperature	

**Characterization:**

The product was characterized by size exclusion chromatography (SEC) and <sup>1</sup>H NMR.

**<sup>1</sup>H NMR spectrum of Polymer (400 MHz, DMSO):**



**SEC profile carried out in THF of Lot# P42382A:**

