

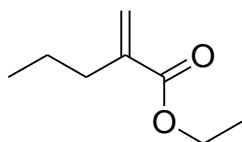
**Sample Name: Ethyl  $\alpha$ -PropylAcrylate**  
(contains 3.3%  $\alpha$ -propyl methyl acrylate)

**Sample #: EPrA-97**

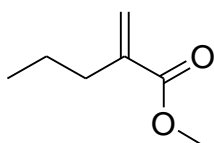
**Lot#: P60511**

**Structure and composition:**

96.7% Ethyl 2-propyl acrylate and 3.3% Methyl 2-propyl acrylate



$C_8H_{14}O_2$   
Mol. Wt.: 142.2



$C_7H_{12}O_2$   
Mol. Wt.: 128.17

**Characterization:**

The product was characterized by  $^1H$ -NMR and FTIR.

