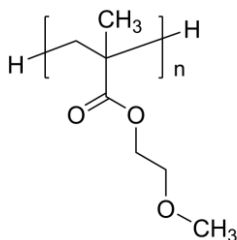


Sample Name:
Poly(2-Methoxyethyl methacrylate)

Sample #: **P42960-MeOEMA**

Structure:



Composition:

Mn x 10 ³	PDI
6.0	1.03

Synthesis Procedure:

Poly(2-methoxyethyl methacrylate) is obtained by GTP polymerization process.

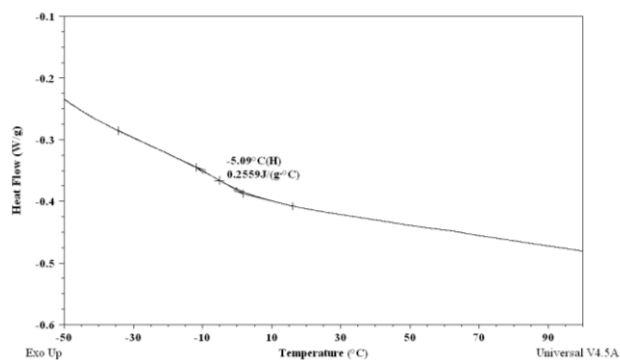
Characterization:

The product was characterized by size exclusion chromatography (SEC) and DSC thermal analysis.

Thermal analysis:

Thermal analysis of the samples was carried out on a TA Q100 differential scanning calorimeter at a heating rate of 10°C/min. The midpoint of the slope change of the heat flow plot of the second heating scan was considered as the glass transition temperature (T_g).

DSC thermogram of the polymer:



SEC elugram of Homopolymer:

