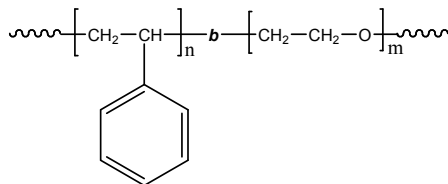


**Sample Name:** Poly(styrene-*b*-ethylene oxide)

**Sample #:** P11118A-SEO

**Structure:**



**Composition:**

Mn x 10 <sup>3</sup> S- <i>b</i> -EO	PDI
3.0- <i>b</i> -13.5	1.09

**Synthesis Procedure:**

Poly(styrene-*b*-ethylene oxide) diblock copolymer is prepared by living anionic polymerization.

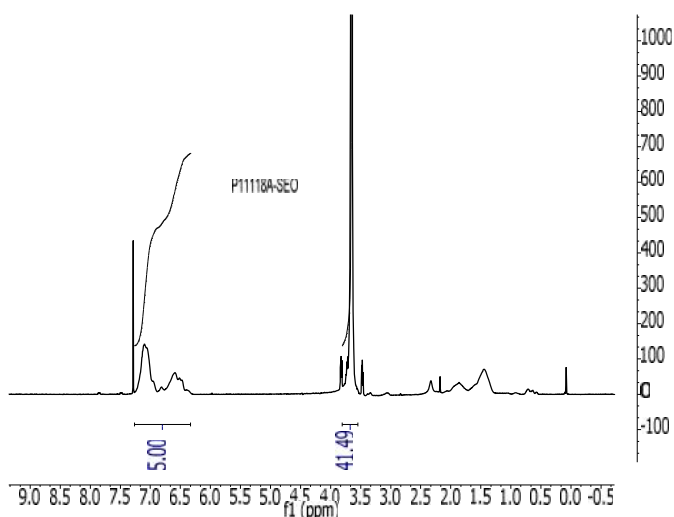
**Characterization:**

The molecular weight and polydispersity index (PDI) of the block copolymer are characterized by size exclusion chromatography (SEC). The composition of the block copolymer was calculated from <sup>1</sup>H-NMR by comparing the peak area of the phenyl polystyrene protons between 6.4 to 7.2 ppm and the ethylene oxide protons at 3.65 ppm.

**Solubility:**

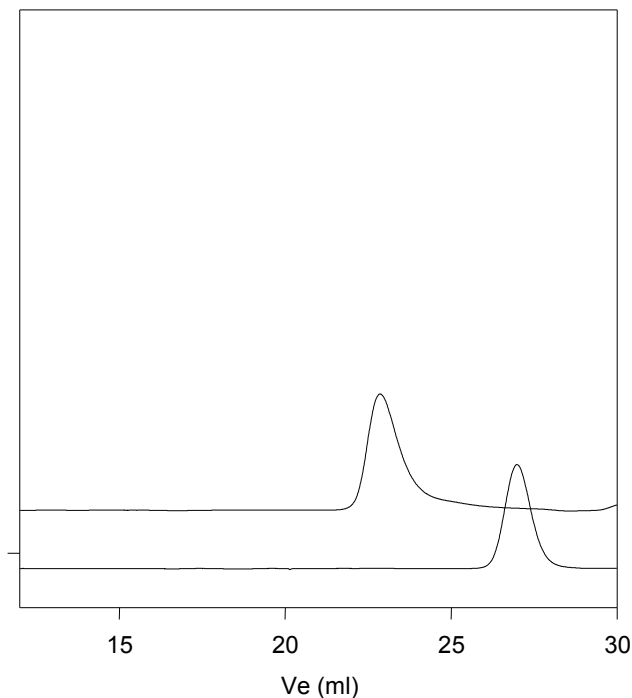
The polymer is soluble in THF (at 35 °C), CHCl<sub>3</sub>, benzene, toluene, dioxane. Low molecular weight SEO with high contents of the polyethylene oxide block can also be solubilized in methanol and water.

**<sup>1</sup>H NMR spectrum of the sample**



**SEC profile of the block copolymer**

**P11118A-SEO**



Size exclusion chromatography of poly(styrene-*b*-ethylene oxide)

—— Poly(styrene), M<sub>n</sub>=3200, M<sub>w</sub>=3500, PI=1.10  
—— Block Copolymer PSt(3000)-*b*-PEO(13,500), PI=1.09  
The composition determined from HNMR.

Thermal analysis of the sample# P11118A-SEO

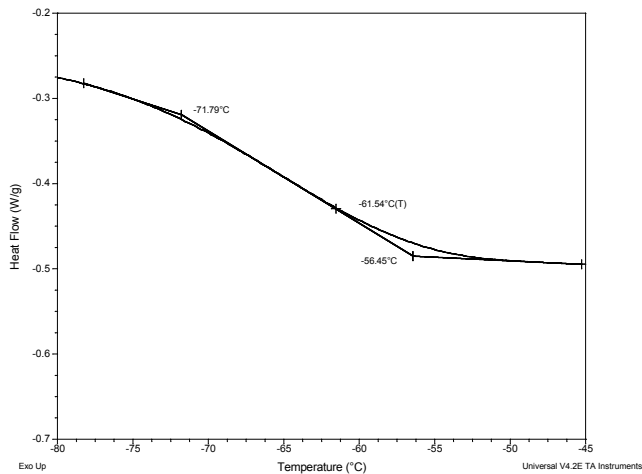
Thermal analysis of the samples was carried out on a TA Q100 differential scanning calorimeter at a heating rate of 20°C/min. The midpoint of the slope change of the heat flow plot of the second heating scan was considered as the glass transition temperature ( $T_g$ ).

Thermal analysis results at a glance

For PS block $T_g$ : 94°C		
For PEO block		
$T_g$ : -62°C	$T_m$ : 52°C	$T_c$ : 20 and -27°C

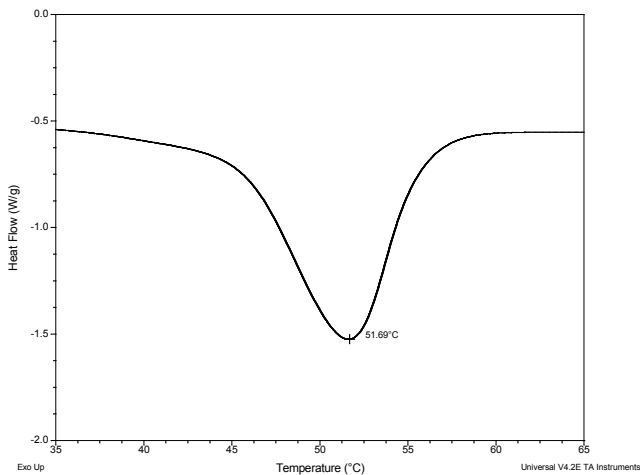
Thermogram for the sample

For PEO block:



Melting and crystallization curve for the PEO block

The melting temperature ( $T_m$ ) was taken as the maximum of the endothermic peak where as the crystallization temperature ( $T_c$ ) was considered as the minimum of the exothermic peak.



For PS block

