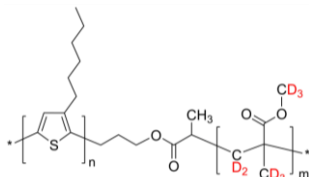


Sample Name: Poly(3-hexylthiophene-2,5-diyl)-
b-poly(deuterated methyl methacrylate-d8)

Sample #: P43281A-3HT-d8MMA

Structure:



Composition:

Mn x 10 ³ (3HT-b-d8MMA)	PDI
9.5-b-10	1.17

Regioregularity of P3HT: ~90% (H-T)

Purification of the polymer:

The crude polymer was recovered from reprecipitation into methanol. The inorganic salts were removed by using a Soxhlet extraction with Methanol and homopoly hecyl thiophene was removed by extraction with hot cyclohexane. The pure polymer was dissolved in chloroform and precipitated in cold acetone/Hexane.

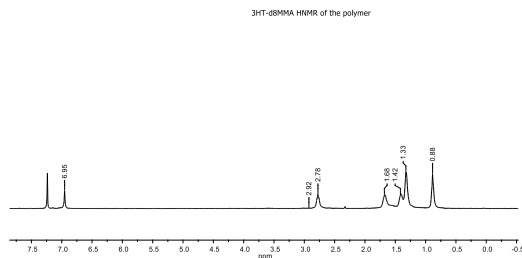
Characterization:

The product was characterized by size exclusion chromatography (SEC) and ¹H NMR data analysis.

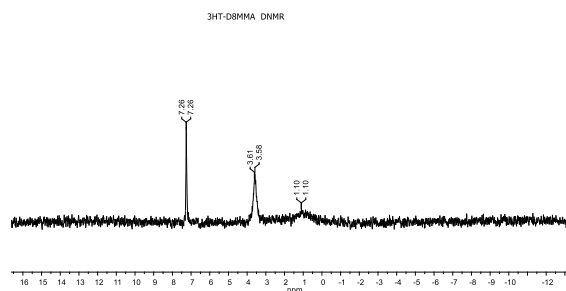
Solubility:

Poly(3-hexyl thiophene-b-MMA-d8) is soluble in THF, Toluene and CHCl₃. It precipitates from methanol and hexane.

H NMR spectrum of poly(3-hexylthiophene-b-MMA-d8):



D NMR spectrum of the Sample:



SEC elugram of the polymer:

