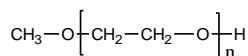


**Sample Name: Poly(ethylene glycol) methyl ether**

**Sample #: P43285-EGOCH3**

**Structure:**

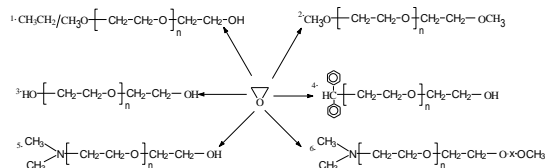


**Composition:**

Mn x 10 <sup>3</sup>	PDI
55.0	1.02

**Synthesis Procedure:**

Polymer is obtained by living anionic polymerization process. The reaction scheme of the polymerization is illustrated below:



Initiator System	Resulting Polymer
1 $\text{CH}_3\text{OCH}_2\text{CH}(\text{CH}_3)\text{OK}$	polyethylene glycol methyl ether
2 $\text{CH}_3\text{OCH}_2\text{CH}(\text{CH}_3)\text{OK}$	$\alpha$ , $\omega$ -term. methyl ether
3 $\text{KOCH}_2\text{CH}_2\text{OK}$	polyethylene glycol
4 $\text{CH}(\text{C}_6\text{H}_5)_2\text{CK}$	polyethylene glycol diphenyl ether
5 $(\text{CH}_3)_2\text{N-CH}_2\text{CH}_2\text{OK}$	methyl amino terminated PEG
6 $(\text{CH}_3)_2\text{N-CH}_2\text{CH}_2\text{OK}$	$\alpha$ -methyl amino $\omega$ -methyl ether term. PEG

**Characterization:**

The product was characterized by Size exclusion chromatography (SEC): Varian liquid chromatograph equipped with UV and refractive detector. SEC columns from Supelco were used with THF containing 2 vol%  $(\text{Et})_3\text{N}$  as the eluent. The molecular weights were determined using light scattering detector and viscosity detector. The molecular weights and the polydispersity indices were calculated.

An aqueous GPC column from Supelco(G5000 PWXL) was also used with 0.5 M acetic acid and 0.8 M  $\text{NaNO}_3$  as the eluent. It was kept at a constant temperature of 50°C. The flow rate was 1.0 ml/min. The column was calibrated with monodisperse poly(ethylene oxide) standards. The molecular weights and the polydispersity index of polyethylene oxide were calculated by using a Visual Basic GPC software.

**Purification of the obtained polymer:**

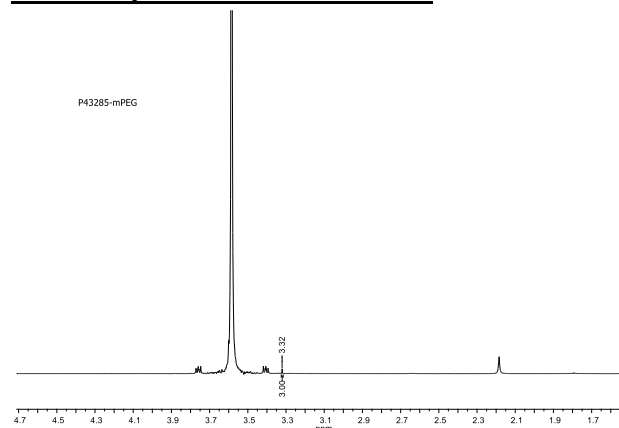
Purification of the obtained polymer was carried out rigorously as following to ensure the removal of the catalyst side product:

1. Dissolved the polymer in de-ionized distilled water to remove the any insoluble organic catalyst side product.
2. Polymer extracted from water with dichloromethane.
3. Polymer solution in dichloromethane was dried over anhydrous sodium sulfate.
4. Solution filtered and then passed through a column packed with basic  $\text{Al}_2\text{O}_3$ .
5. Solution concentrated on rota-evaporator.
6. Solution precipitated in cold diethyl ether.
7. Dried under vacuum for 48h at 38 °C.

**Solubility:**

Poly(ethyl glycol) is soluble in toluene, THF, water and  $\text{CHCl}_3$ . The polymer is insoluble in hexane, ether, cold isopropanol, and ethanol.

**H NMR spectrum of the Product:**



**SEC elugram of the polymer:**

