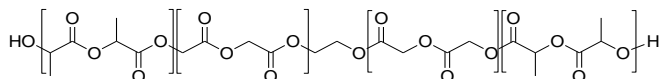


**Sample Name:** Poly(lactide-co-glycolide), random  
Lactide in DL-Form

**Sample #:** P60627B-LAGLran

### Structure:



### Composition:

Mn x 10 <sup>3</sup>	PDI
7.5	1.3

LA:GL ratio (NMR) 60:40
----------------------------

### Synthesis Procedure:

The polymer was synthesized by using ethylene glycol initiator and SnOct2 as a catalyst.

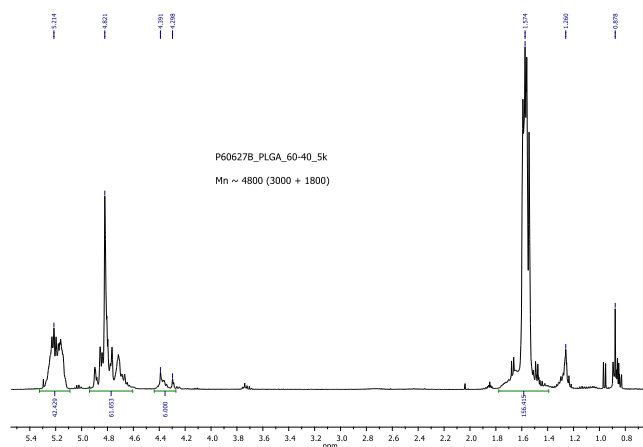
### Characterization:

The Mn is calculated from NMR and Mw/Mn index (PDI) are obtained by size exclusion chromatography carried out in THF using Supelco columns G6000HXL, G4000HXL and G2000 HXL.

### Solubility:

Polymer is soluble in CHCL3, CH2Cl2, and THF.

### H NMR spectrum of polymer:



### SEC elugram of the polymer:

