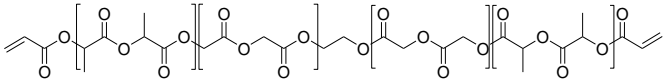


Sample Name: Poly(DL-lactide-co-glycolide), α,ω -bis(acryloxy)-terminated, with 1,2-ethanedioxy in the middle of the polymer chain

Sample #: P60635-DLLAGly-2Acrylate

Structure:



Composition:

$M_n \times 10^3$	PDI
2.4	1.25

DLLA: Glycolide Molar ratio	60:40
Functionality	80%

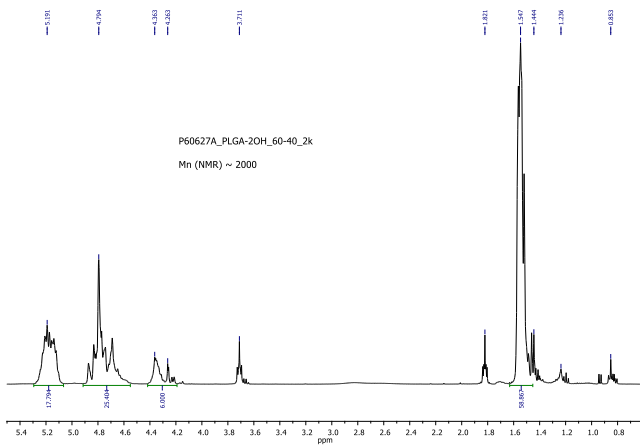
Synthetic Procedure:

The product was synthesized by using Ethylene glycol initiator and Sn Octoate catalyst followed by treating polymer with acryloyl chloride.

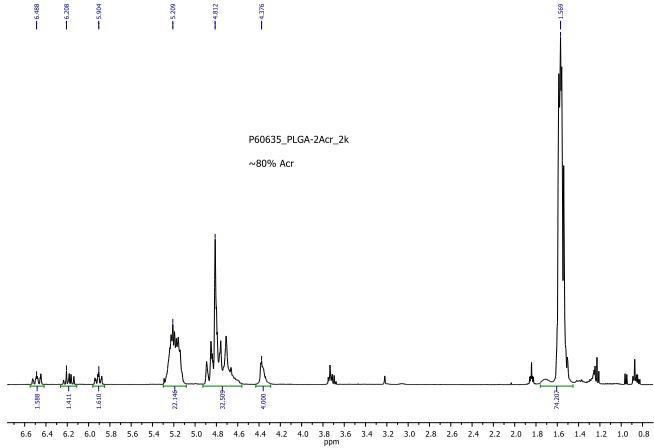
Characterization:

The product was characterized by size exclusion chromatography (SEC) and ^1H NMR data analysis.

^1H NMR spectrum of Random copolymer:



^1H NMR spectrum of DLLAGly-2Acrylate:



SEC profile of the polymer:

Agilent GPC/SEC Software

