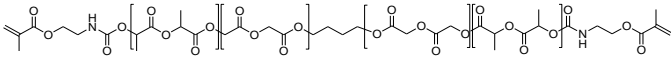


Sample Name: Poly(DL-lactide-co-glycolide), α,ω -bis(methacryloxy)-terminated, with 1,4-butanedioxy in the middle of polymer chain

Sample #: P60651-DLLAGly-2Methacrylate

Structure:



Composition:

$M_n \times 10^3$	PDI
9.0	1.09

DLLA: Glycolide Molar ratio 58:42
Functionality 80%

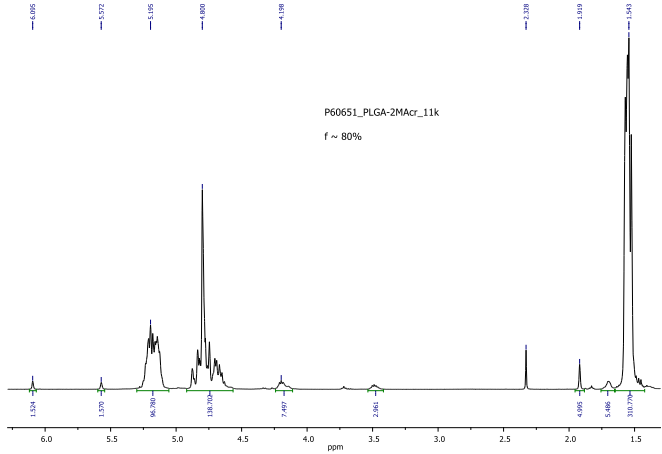
Synthetic Procedure:

The product was synthesized by using 1,4-butanediol initiator and Sn Octoate catalyst followed by treating the polymer with isocyanatoethyl methacrylate.

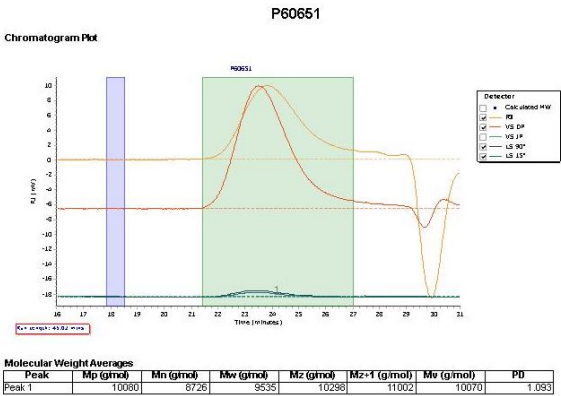
Characterization:

The product was characterized by size exclusion chromatography (SEC) and ^1H NMR data analysis.

^1H NMR spectrum of DLLAGly-2Methacrylate:



SEC profile of the polymer:



^1H NMR spectrum of Random copolymer:

