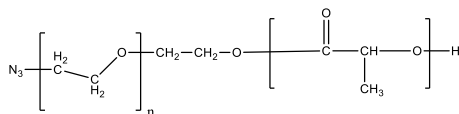


Sample Name:
Poly(lactide), (α -azide, ω -hydroxy)-terminated

Linker Tetra Ethoxy

Sample #: **P43609C-LAN3 (DL-Form)**

Structure:

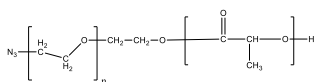
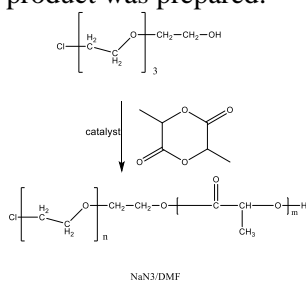


Composition:

Mn x 10 ³	PDI
1.9	1.6

Synthesis Procedure:

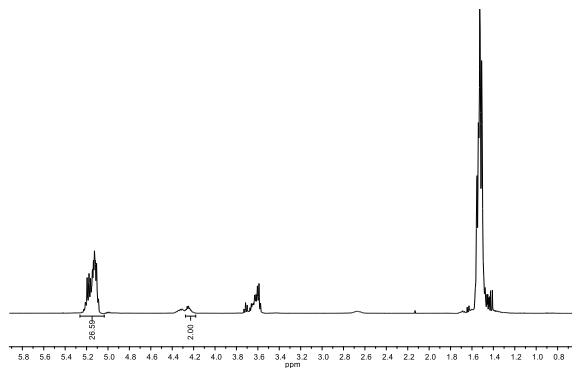
The following reaction scheme shows how the product was prepared:



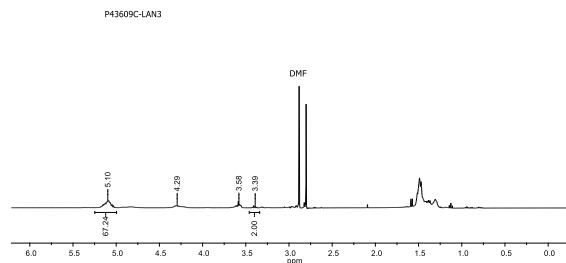
Characterization:

The product was characterized by size exclusion chromatography (SEC) and ¹H NMR data analysis.

HNMR spectrum of Cl-LA:



HNMR spectrum of N3-LA:



SEC elugram of the polymer:

