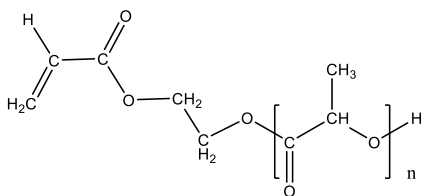


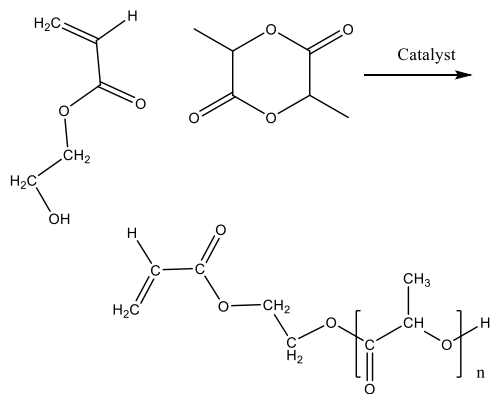
Poly(DL-lactide), α -acryloyloxy terminated

Structure:



$M_n \times 10^3$	PDI
9.5	1.2

The scheme of the reaction is illustrated below:



PDLLA is soluble in CHCl_3 , Acetone, THF and it is insoluble in ethanol, hexane. It Precipitated from Acetone or CHCl_3 into EtOH or hexane/EtOH.

PDLLAs were analyzed by size exclusion chromatography (SEC) to obtain the polydispersity index (PDI). M_n was estimated by NMR. Percentage of vinyl functionality was determined from the integrals ratio of the peaks at 2.90 and 5.9, 6.1 and 6.4 ppm.

Workspace Details	
Workspace name	Calibration 2021-10-27
Location	D:\GPC\Workspaces\Calibration 2021-10-27\
Comments	
Created by	agilent2 at 4:40:59 PM on October 27, 2021

