

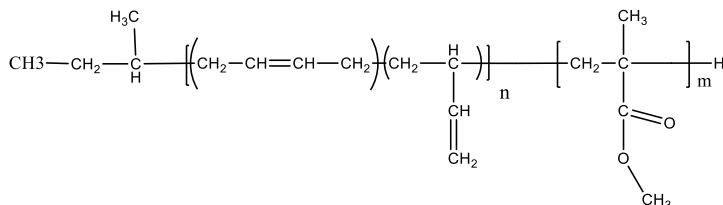
Product Profile

Identification

Product Name: Poly(1,2-butadiene)-b-poly(methyl methacrylate)

Product Lot Number: P2278R-BdMMA

Product Chemical Architecture:



Composition:

Mn (g/mole)	97,000-b-216,000
Bd-b-MMA	
Mw/Mn	1.28
dn/dc (mL/g)	0.105-to 0.120 depending on composition of the block copolymer

Method of Synthesis

The polymer is synthesized by anionic polymerization Sec. Butyllithium as initiator.

Solubility in different solvents

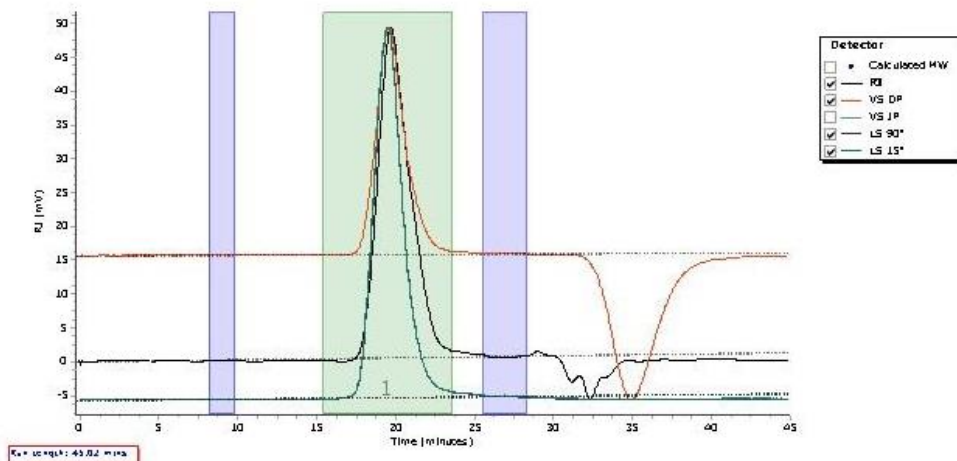
THF	√	DMF	X
Alcohol	X	CHCl ₃	√
Toluene	Yes depends on composition	DMSO	X

Validation of Architecture

A. Gel Permeation Chromatography (GPC), SEC- Profile:

Chromatogram Plot

P2278R-BdMMA



Molecular Weight Averages

Peak	Mp (g/mol)	Mn (g/mol)	Mw (g/mol)	Mz (g/mol)	Mz+1 (g/mol)	Mv (g/mol)	PD
Peak 1	422727	312935	402279	489565	571414	473441	1.286

B. NMR (HNMR) of polymer

