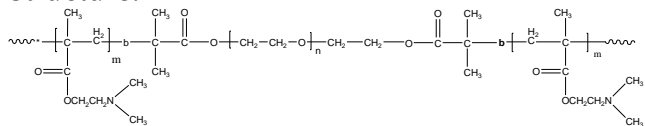


**Sample Name:**

**Poly(N,N-dimethylaminoethyl methacrylate-  
b-ethylene oxide-b-N,N-dimethylaminoethyl  
methacrylate)**

Sample #: P11252D-DMAEMAEODMAEMA

**Structure:****Composition:**

Mn x 10 <sup>3</sup>	PDI
2.6-b-2.0-b-2.6	1.3

**Synthesis Procedure:**

Polymer is obtained by anionic polymerization:

**Characterization:**

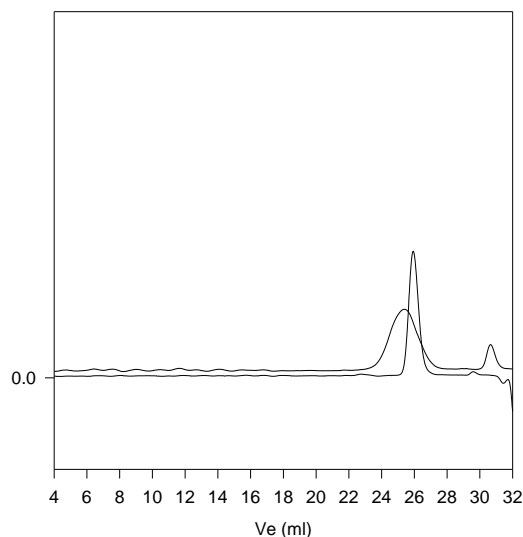
The molecular weight and polydispersity index of this polymer were determined by size exclusion chromatography (SEC) using a Varian liquid chromatograph equipped with a UV and refractive index detector.

**Solubility:**

The tri-block polymer is soluble in , ethanol, methanol, THF, and CHCl<sub>3</sub>.

**SEC of Sample:**

**P11252D-DMAEMAEODMAEMA**



Size exclusion chromatography of poly(dimethylaminoethyl methacrylate-  
b-ethylene oxide-b-dimethylaminoethylmethacrylate):

- Polyethyleneglycol: M<sub>n</sub>=2000, M<sub>w</sub>=2200, PI=1.10
- Block Copolymer DMAEMA-b-EO-b-DMAEMA  
Mn: 2600-b-2000-b-2600, PI=1.30  
(Composition from H NMR)

**HNMR of the Polymer:**