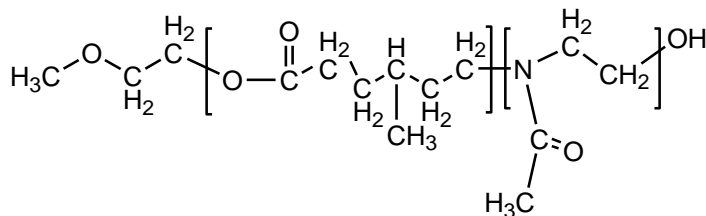


Sample Name: Poly(γ -methyl ϵ -caprolactone-b-Methyloxazoline)

Sample #: P11394E-4MeCL-MEOXZ

Structure:

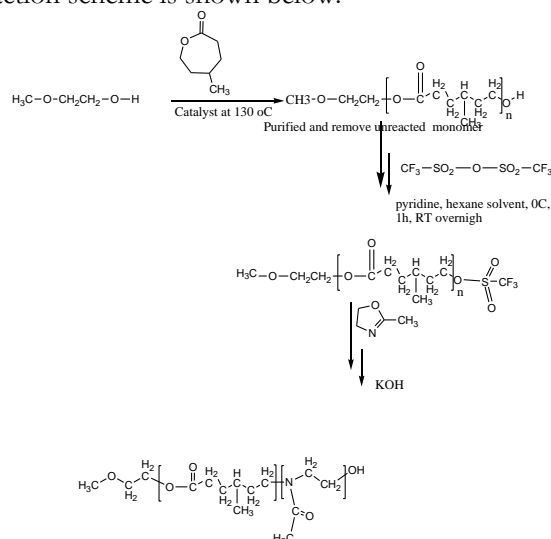


Composition:

Mn x 10 ³ 4MeCL-MEOXZ	Mw/Mn (PDI)
9.5-b-0.5	1.4
Dp: 74-b-5	

Synthesis Procedure:

The reaction scheme is shown below:



Characterization:

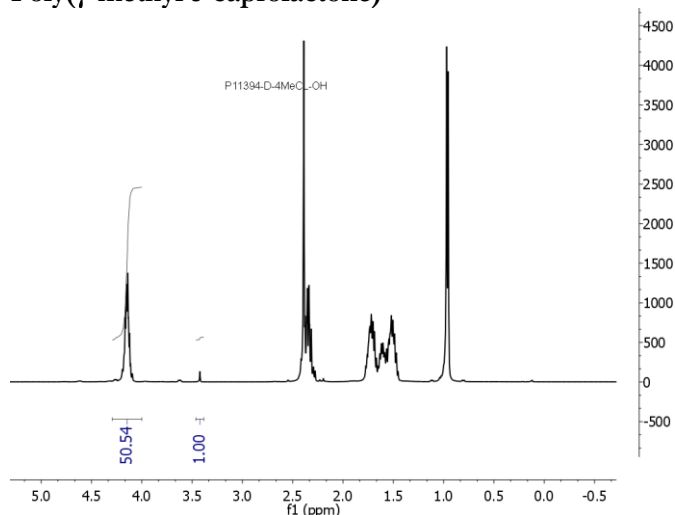
By size exclusion chromatography (SEC) to obtain the molecular weight and polydispersity index (PDI). The final block copolymer composition was calculated from ¹H-NMR spectroscopy.

Solubility:

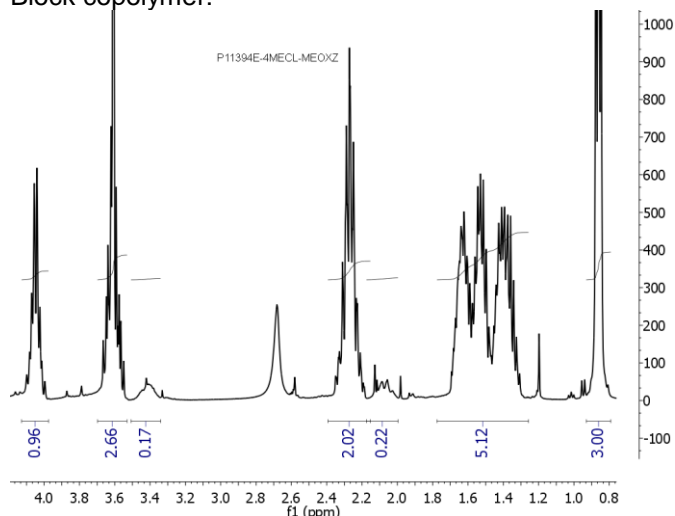
Polymer is soluble in THF, Chloroform, and precipitated in cold acetone, hexane

¹H NMR spectrum of the sample

Poly(γ -methyl ϵ -caprolactone)

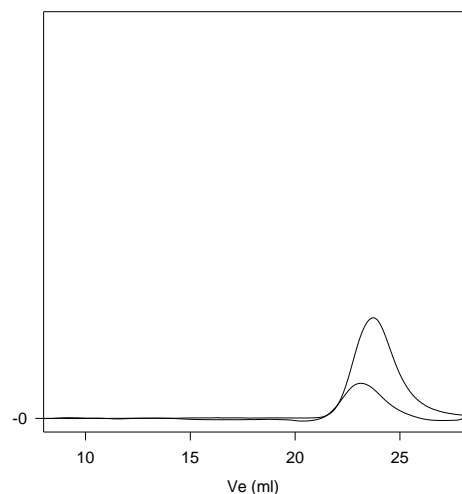


Block copolymer:



SEC profile of the block copolymer

P11394E-4MeCLMEOXZ



— SEC profile of Poly(4-methyl- ϵ -caprolactone-b-MEOXZ):
 — Poly4MeCL, M_n=9,500, M_w=13,500, PI=1.4
 — Block Copolymer P4 MeCL(9,500)-b-PMEOXZ(500), PI=1.4