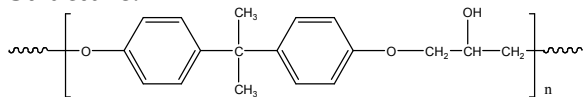


Sample Name: Poly (β -hydroxy ether)

Sample #: P14001-HE

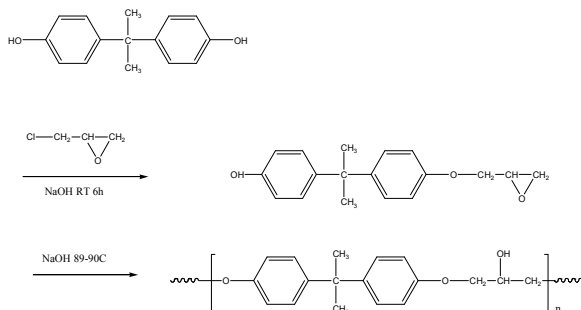
Structure:



Composition:

Mw $\times 10^{-3}$ (Mn)	Mw/Mn	T _g (°C)
3.6 (2.2)	1.6	-15

Synthesis Procedure:



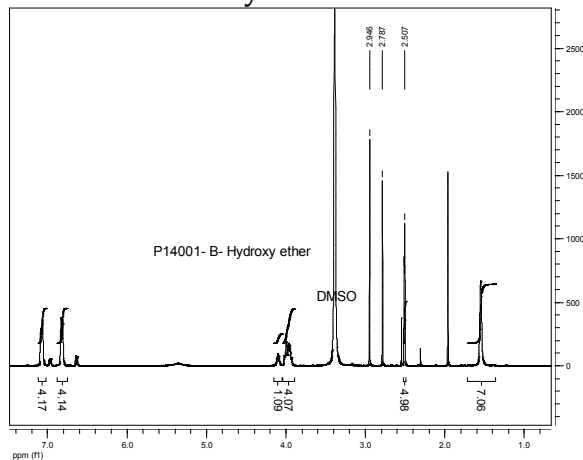
Solubility:

Polymer is soluble in THF and CHCl₃.

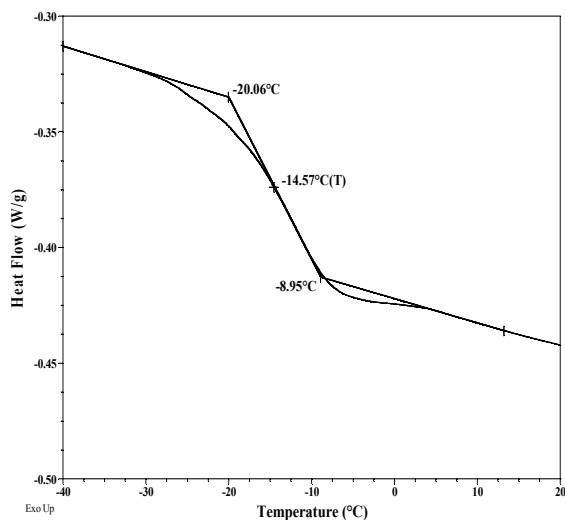
Thermal analysis

Thermal analysis of the samples was carried out on a TA Q100 differential scanning calorimeter at a heating rate of 10 °C/min. The midpoint of the slope change of the heat flow plot of the second heating scan was considered as the glass transition temperature (T_g).

HNMR of the Polymer in DMSO:

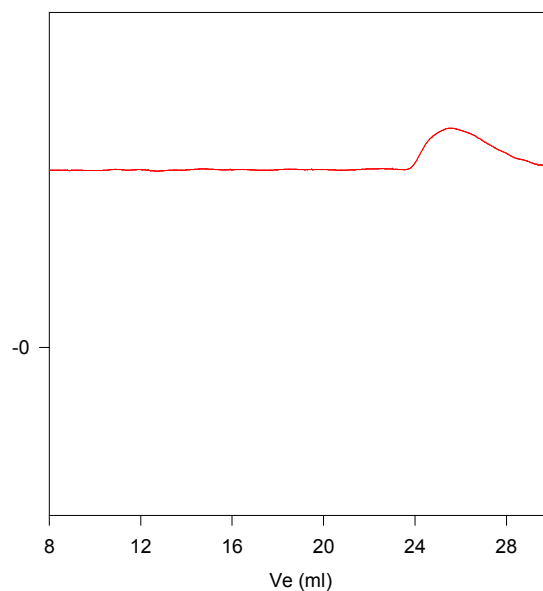


DSC thermogram for the polymer



SEC profile of the Polymer:

P14001-HE



Size exclusion chromatograph of the polymer:

M_n=2200, M_w=3600, M_w/M_n=1.6