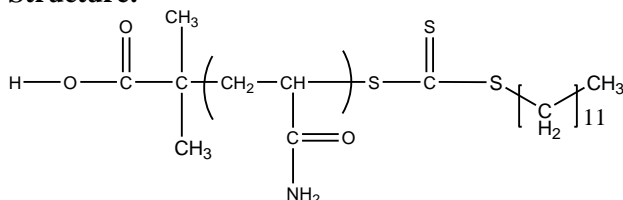


Sample Name: Poly (Acrylamide)

Sample #: P14875B-AMD

Structure:

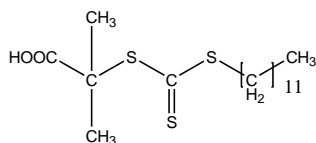


Composition:

$\text{Mn} \times 10^3$	Mw/Mn (PDI)
5.5	1.4
T_g ($^{\circ}\text{C}$)	184

Synthesis Procedure:

Poly (acrylamide) is synthesized by RAFT polymerization of acrylamide using 4, 4'-azo (4-cyanopentanoic acid) as initiator and xanthate as chain transfer agent.



Characterization:

Polyacrylamide was analyzed by size exclusion chromatography (SEC) to obtain the molecular weight and polydispersity index (PDI) using water containing 0.1M NaNO_3 and 0.01M NaH_2PO_4 and 4 vol% acetonitrile as eluent. The polymer architecture was also verified by ^1H -NMR spectroscopy by comparing the peak area of the terminal moieties bearing xanthate unit. The molecular weight can also be varied by HNMR and by SEC the distribution of the polymer calculated using poly acrylic acid standards polymers.

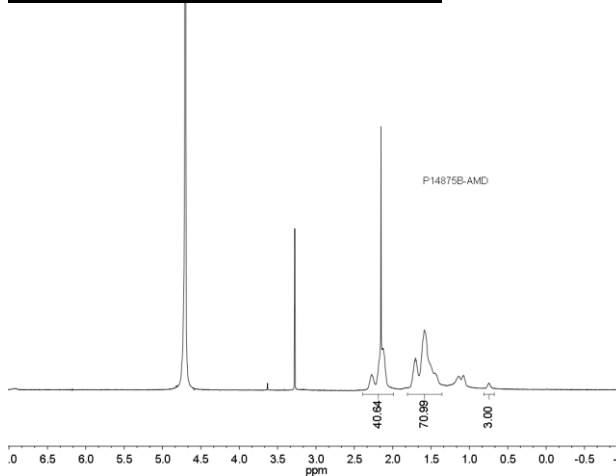
Thermal analysis:

Thermal analysis of the samples was carried out on a TA Q100 differential scanning calorimeter at a heating rate of $10^{\circ}\text{C}/\text{min}$. The midpoint of the slope change of the heat flow plot of the second heating scan was considered as the glass transition temperature (T_g).

Solubility:

Polymer is soluble in water.

^1H -NMR Spectrum of the Polymer:

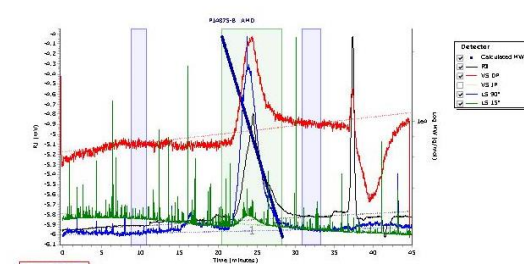


SEC elugram of the polymer:

Agilent GPC/SEC Software

P14875-B AMD

Chromatogram Plot



Peak	Mn (g/mol)	Mw (g/mol)	Mz (g/mol)	Mz+1 (g/mol)	Mz+2 (g/mol)	PDI
1	7332	5392	7708	11040	16482	1.429

Processing Parameters
Method: RI
Concentration Detector Used in: RI
Analysis: 100.00
Flow rate (mL/min): 1.00
Concentration options: Calculate Sample Concentration from Entered Sample Properties
Entered divs (mL/g): 0.180
Entered Ext Coeff ((mg/mL)-1)(cm-1): 1.000
Calculated RI concentration (mg/mL): 0.492

DSC thermogram for the polymer:

