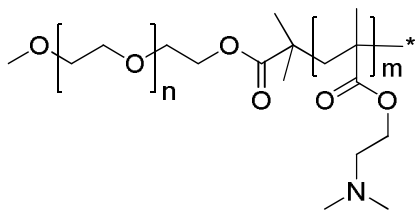
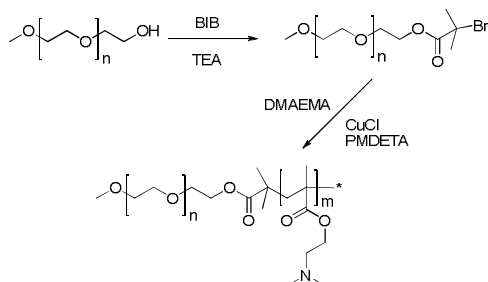


Sample Name:

Poly[(ethylene oxide-*b*-(2-dimethylaminoethyl) methacrylate]

Sample # P14909-EODMAEMA**Structure:****Composition:**

$M_n \times 10^{-3}$ EO- <i>b</i> -DMAEMA	PDI
1.8- <i>b</i> -3.3	
DMAEMA content:	65 wt%

Synthetic procedure:**Characterization:**

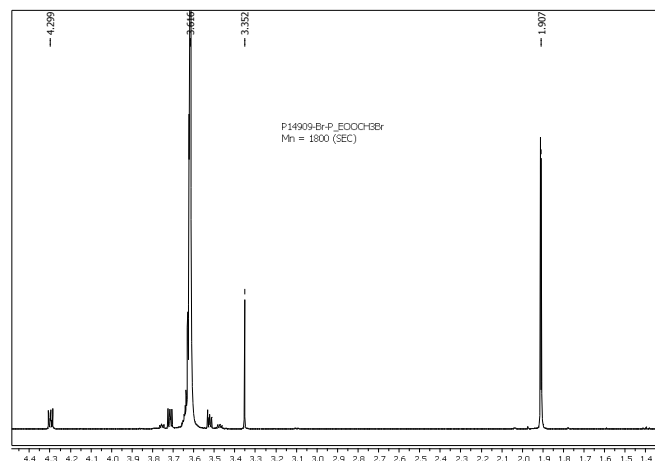
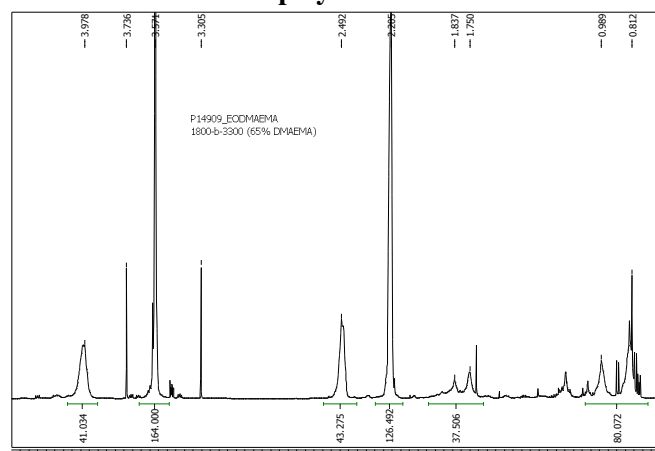
The molecular weight characterization was performed by ^1H NMR and size exclusion chromatography (SEC) using refractive index and light-scattering detectors.

Composition:

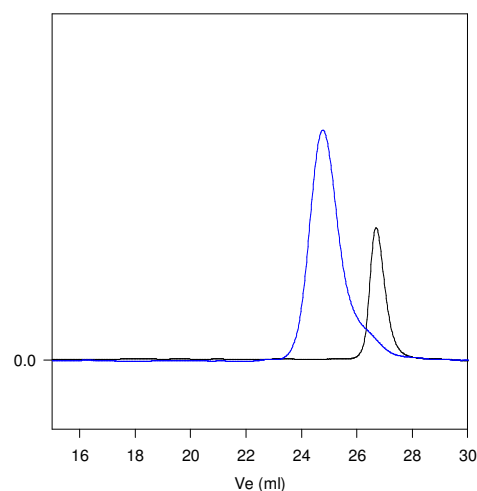
The ratio between blocks was determined by ^1H NMR.

Solubility:

Polymer is soluble in acetone, THF, CHCl_3 .
It was precipitated from hexane / ether.

 ^1H NMR of dibromo-terminated PEO: **^1H NMR of diblock copolymer:****SEC elograms:**

P14909-EODMAEMA



Size exclusion chromatography of the product

— PEO, $M_n=1,800$, $M_w=1,900$, $M_w/M_n=1.05$

— Poly(ethylene oxide-*b*-N,N-dimethylaminoethylmethacrylate)

M_n : PEO(1,800)-*b*-DMAEMA(3,300) $M_w/M_n=1.3$