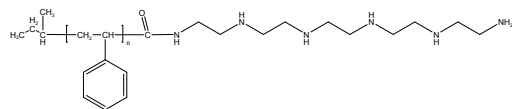


Sample Name:

**Pentaethyl Hexamine Terminated
Polystyrene**

Sample #: P18083A-SPEHA

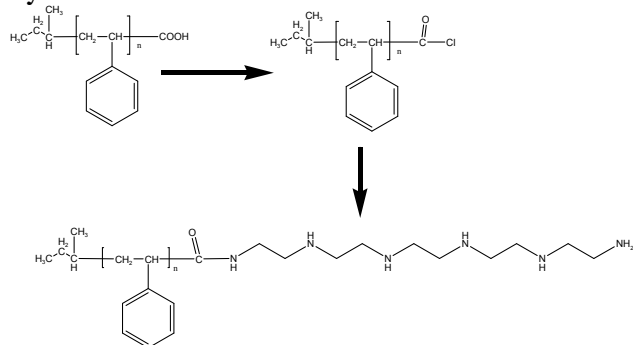
Structure:



Composition:

Mn x 10 ³	PDI
1.4	1.13
Functionality %	99

Synthesis Procedure:

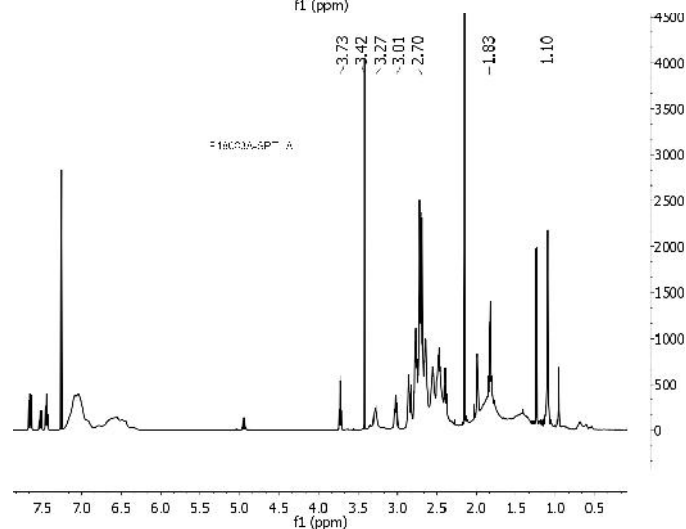
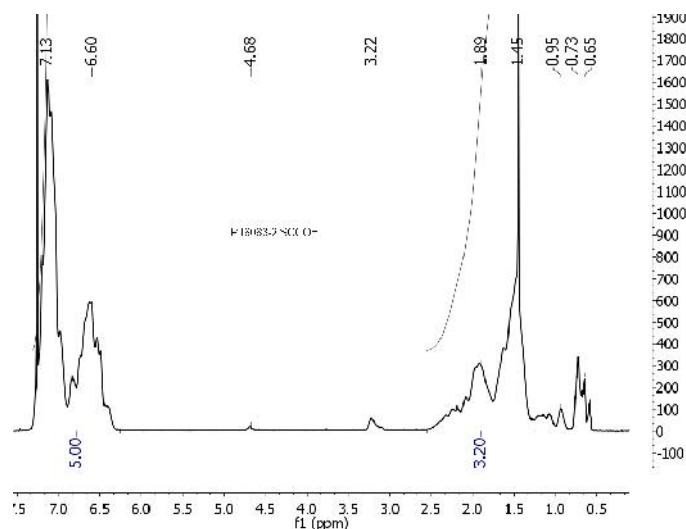
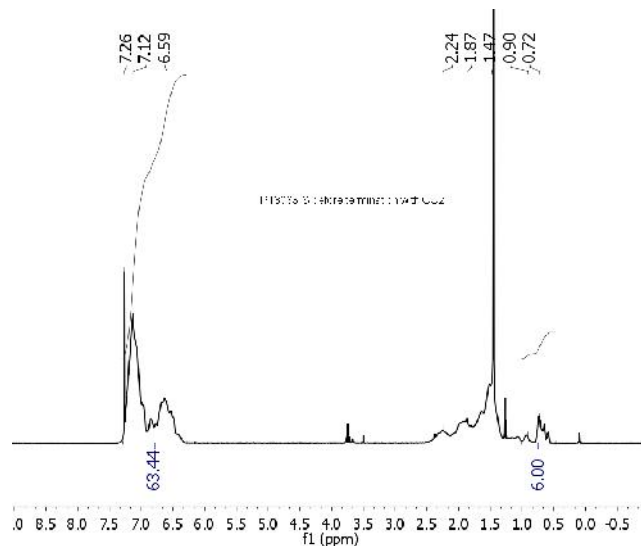


Characterization:

The molecular weight and polydispersity index of this polymer were determined before addition of the CO₂H function, by size exclusion chromatography (SEC) using a Varian liquid chromatograph equipped with a UV and refractive index detector. Polymer functionality was determined by titration with NaOH using phenolphthalein as the indicator.

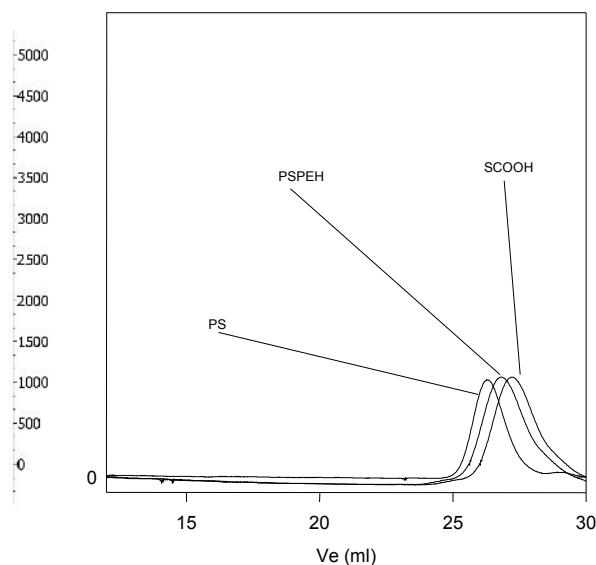
Solubility:

Polymer is soluble in toluene, THF, CHCl₃ and can be precipitated in water and cold methanol.



SEC of Sample:

P18083A-SPEHA



Size exclusion chromatography of monocarboxy terminated polystyrene (before adding Co₂).

M_n=1,400, M_w=1,500 PI=1.13 functionality>95%

After attaching COOH the elution retarded