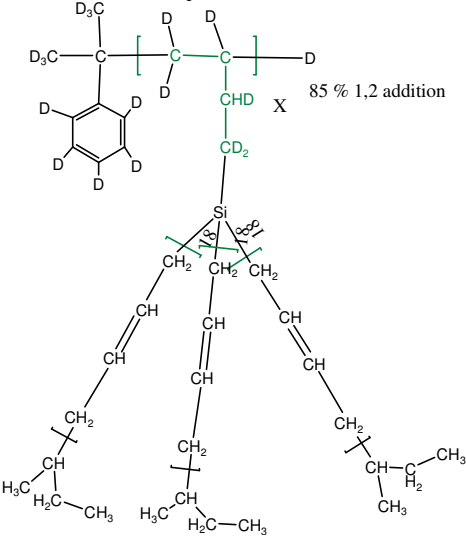
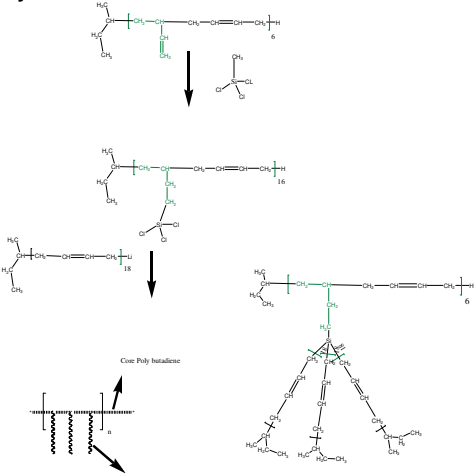


**Sample Name: P18563B-12Bd**  
**Protonated poly butadiene branches grafted on deuterated Poly butadiene back bone**



Mn x 10 <sup>3</sup> (total)	PDI
13.0	1.7
Mn of each arm: (1.1)	

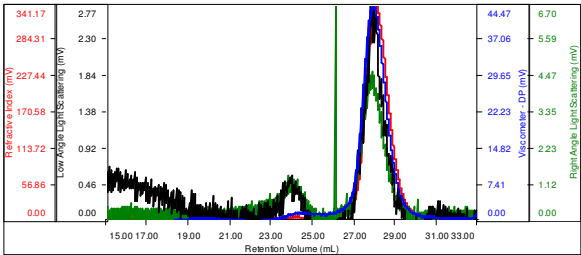
**Synthesis Procedure:**



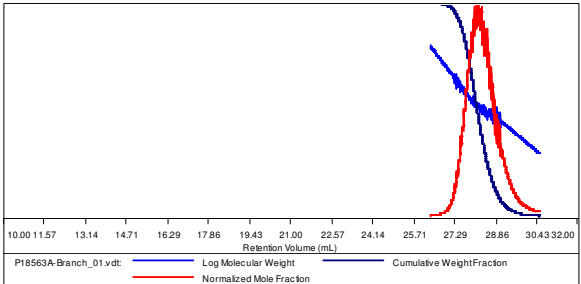
Branches of Poly butadiene rich in 1,4 addition  
**Linker : PdBd: P18483A-**

SEC of the Polymer: (eah branch of Poly butadiene)  
**Sample ID: P18563A-Bd Branch**

Concentration (mg/mL)	8.4091
Sample dn/dc (mL/g)	0.1270
Method File	PS80K-March13-2014-0000.vcm
Column Set	3x PL 1113-6300
System	System 1

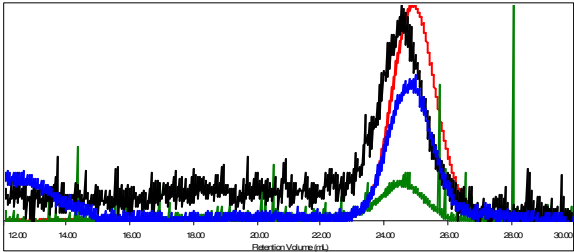


Sample	Mn	Mw	Mp	Mw/Mn	IV
P18563A-Branch_01.vdt	1,093	1,199	1,187	1.097	0.1408



**Sample ID: P18563B-Bd star**

Concentration (mg/mL)	2.2190
Sample dn/dc (mL/g)	0.1270
Method File	PS80K-Apr15-2014-0000.vcm
Column Set	3x PL 1113-6300
System	System 1



Sample	Mn	Mw	Mp	Mw/Mn	IV
P18563B-Bd_star_01.vdt	13,478	23,795	16,228	1.765	0.0590

