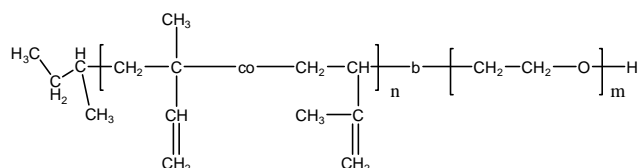


Sample Name: Poly(Isoprene-b-ethylene oxide)

Sample #: P18833A-IPEO

(poly isoprene block rich in 1,2 & 3,4 microstructure)



Composition:

Mn × 10 ³ PIP-b-EO	Mw/Mn (PDI)
18.0-b-0.5	1.10

Synthesis Procedure:

By anionic process using.

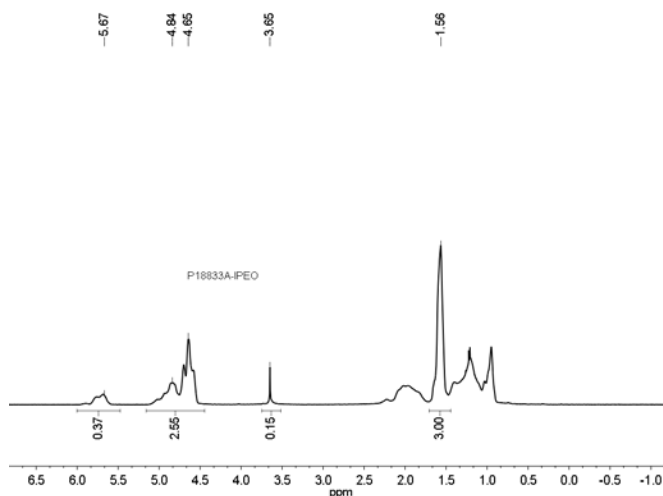
Characterization:

By size exclusion chromatography (SEC) to obtain the molecular weight and polydispersity index (PDI). The final block copolymer composition was calculated from ¹HNMR spectroscopy by comparing the peak area of the vinylic butadiene protons at about 5.4 ppm with the ethylene oxide protons at 3.6 ppm. Block copolymer PDI is determined by SEC.

Solubility:

Poly(isoprene-b-ethylene oxide) is soluble in THF, CHCl₃, and toluene. The polymer has variable solubility in hexane, methanol, ethanol and water depending on its composition.

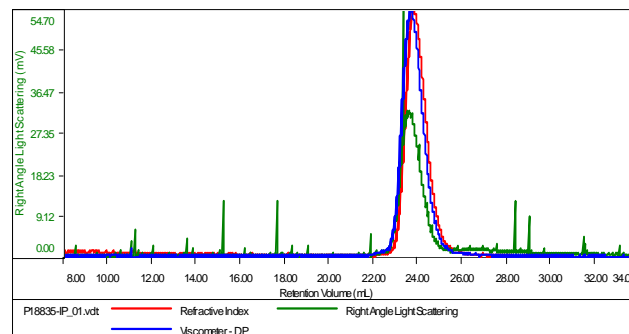
¹H NMR spectrum of the sample



SEC elugram:

Sample ID: P18833-IPCH

Concentration (mg/mL)	9.1678
Sample dn/dc (mL/g)	0.1250
Method File	PS80K-august 5-2014-0000.vcm
Column Set	3x PL 1113-6300
Solvent	THF



Sample	Mh	Mw	Mp	Mw/Mh	IV
P18833-IP_01.vdt	17,921	19,752	18,306	1.102	0.1895

