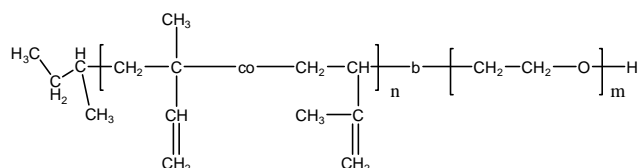


Sample Name: Poly(Isoprene-b-ethylene oxide)

Sample #: P18833D-IPEO

(poly isoprene block rich in 1,2 & 3,4 microstructure)



Composition:

Mn $\times 10^3$ PIP-b-EO	Mw/Mn (PDI)
18.0–b–1.5	1.10

Synthesis Procedure:

The polymer was synthesized by anionic process.

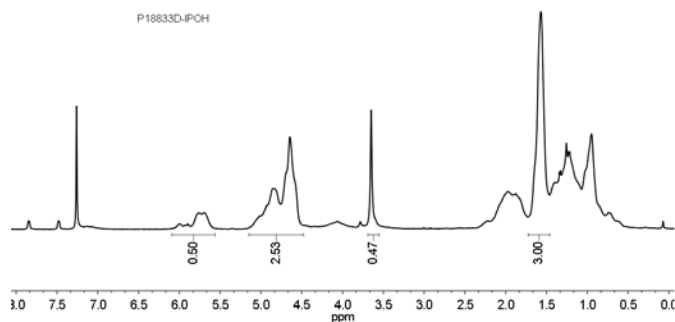
Characterization:

By size exclusion chromatography (SEC) and composition was calculated from ^1H NMR spectroscopy.

Solubility:

Poly(isoprene-b-ethylene oxide) is soluble in THF, CHCl_3 , and toluene. The polymer has variable solubility in hexane, methanol, ethanol and water depending on its composition.

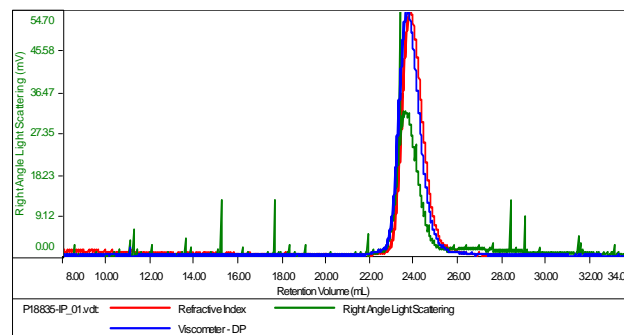
^1H NMR (500 MHz, CDCl_3):



SEC elugram:

Sample ID: P18833-IPCH

Concentration (mg/mL)	9.1678
Sample ch/d: (mL/g)	0.1250
Method File	PS80K-august 5-2014-0000.vcm
Column Set	3xPL 1113-6300
Solvent	THF



Sample	Mn	Mw	Mp	Mw/Mn	IV
P18835-IP_01.vdt	17,921	19,752	18,306	1.102	0.1895

