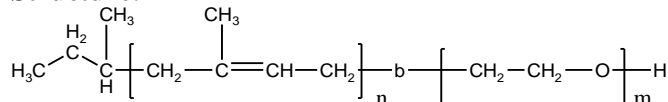


Sample Name:
Poly(1,4-isoprene)-b-poly(ethylene oxide)

Sample #: P18864A-IPEO

Structure:



Composition:

Mn x 10 ³ PIP-b-EO	Mw/Mn (PDI)
18.5-b-5.0	1.08

Synthetic Procedure:

Poly(isoprene [1,4-addition or 1,2-addition]-b-ethylene oxide) was prepared by anionic process.

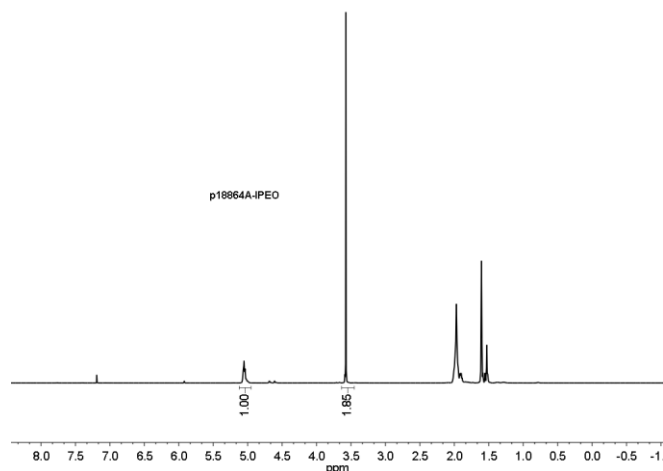
Characterization:

The polymer was characterized by SEC and ¹H NMR.

Solubility:

Poly(isoprene-b-ethylene oxide) is soluble in THF, CHCl₃, and toluene. The polymer has variable solubility in hexane, methanol, ethanol and water depending on its composition.

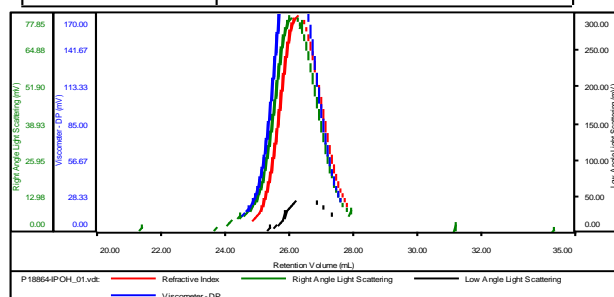
¹H NMR (500 MHz, CDCl₃) spectrum:



SEC elugram of polyisoprene block:

Sample ID: P18864-IPOH

Concentration (mg/mL)	18.9229
Sample dn/dc (mL/g)	0.1200
Method File	PS80K-0903-2014-0000.vcm
Column Set	3x PL 1113-6300
Solvent	THF

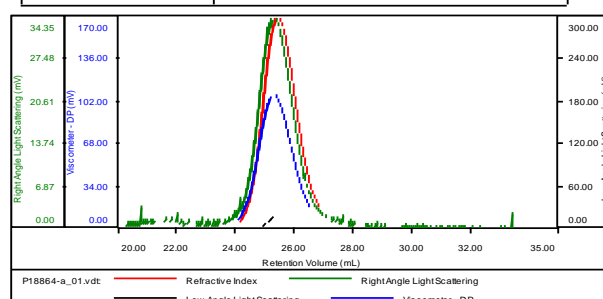


Sample	MW Number Average (Da)	MW Weight Average (Da)	MW at Peak (Da)	Polydispersity	Intrinsic Viscosity (dL/g)
P18864-IPOH_01.vdt	18,682	20,988	18,505	1.123	0.3962

SEC elugram of the diblock copolymer:

Sample ID: P18864A-IPEO

Concentration (mg/mL)	6.6826
Sample dn/dc (mL/g)	0.1100
Method File	PS80K-0903-2014-0000.vcm
Column Set	3x PL 1113-6300
Solvent	THF



Sample	MW Number Average (Da)	MW Weight Average (Da)	MW at Peak (Da)	Polydispersity	Intrinsic Viscosity (dL/g)
P18864-a_01.vdt	22,720	23,850	23,066	1.050	0.4600