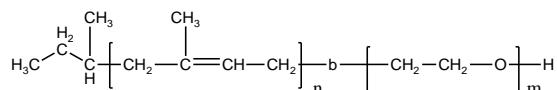


Sample Name:
Poly(1,4-isoprene)-b-poly(ethylene oxide)

Sample #: **P18864F-IPEO**

Structure:



Composition:

Mn x 10 ³ PIP-b-EO	Mw/Mn (PDI)
18.5-b-4.3	1.25

Synthesis Procedure:

By anionic Process

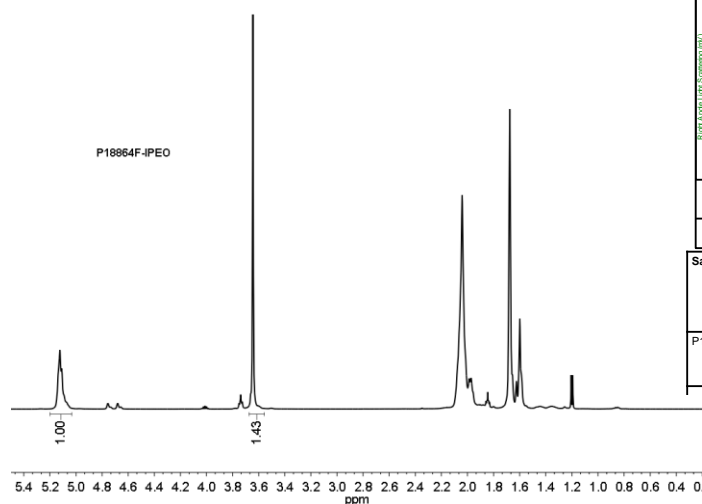
Characterization:

By SEC and HNMR.

Solubility:

Poly(isoprene-b-ethylene oxide) is soluble in THF, CHCl₃, and toluene. The polymer has variable solubility in hexane, methanol, ethanol and water depending on its composition.

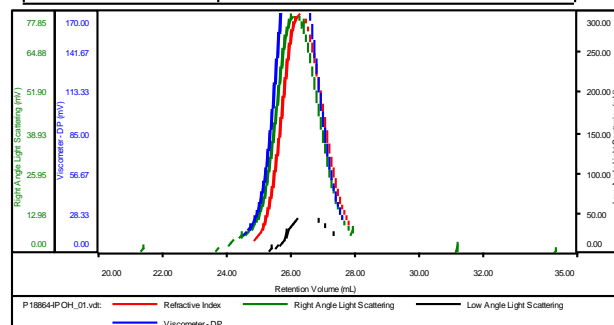
¹H NMR spectrum of the sample:



SEC profile of the block copolymer:

Sample ID: P18864-IPOH

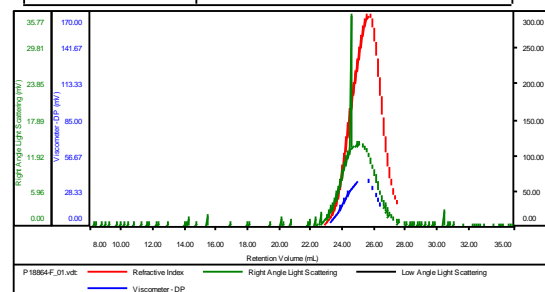
Concentration (mg/mL)	18.9229
Sample dn/dc (mL/g)	0.1200
Method File	PS80K-0903-2014-0000.vcm
Column Set	3x PL 1113-6300
Solvent	THF



Sample	MW Number Average (Da)	MW Weight Average (Da)	MW at Peak (Da)	Polydispers	Intrinsic Viscosity (dL/g)
P18864-IPOH_01.vdt	18,682	20,988	18,505	1.123	0.3962

Sample ID: P18864F-IPEO

Concentration (mg/mL)	4.7806
Sample dn/dc (mL/g)	0.1000
Method File	PS80K-0903-2014-0000.vcm
Column Set	3x PL 1113-6300
Solvent	THF



Sample	MW Number Average (Da)	MW Weight Average (Da)	MW at Peak (Da)	Polydispers	Intrinsic Viscosity (dL/g)
P18864F_01.vdt	23,459	29,296	23,190	1.249	0.3858