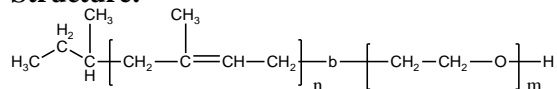


Sample Name:
Poly(1,4-isoprene)-b-poly(ethylene oxide)

Sample #: **P18866B-IPEO**

Structure:



Composition:

Mn x 10 ³ PIP-b-EO	Mw/Mn (PDI)
22.7-b-5.5	1.08

Synthesis Procedure:

Poly(Isoprene 1,4 addition or 1,2 addition)-b-ethylene oxide) can be prepared by anionic process

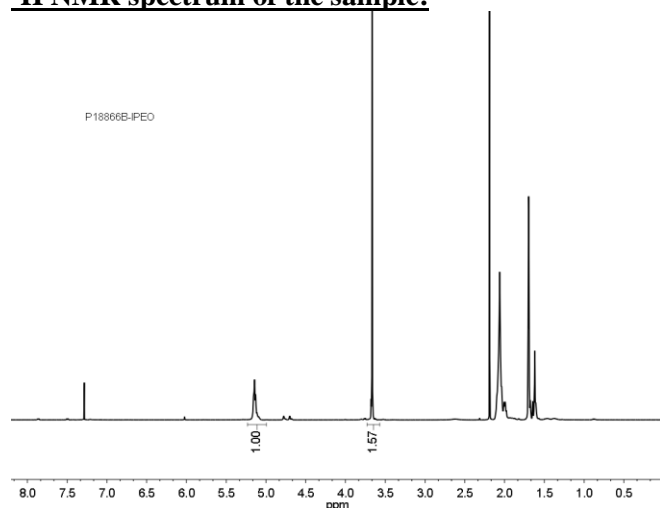
Characterization:

By SEC and HNMR.

Solubility:

Poly(isoprene-b-ethylene oxide) is soluble in THF, CHCl₃, and toluene. The polymer has variable solubility in hexane, methanol, ethanol and water depending on its composition.

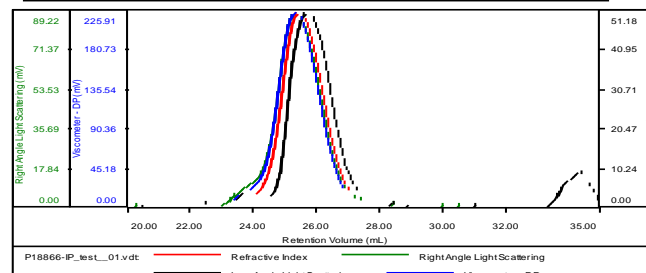
¹H NMR spectrum of the sample:



SEC profile of the block copolymer:

Sample ID: P18866-IPOH

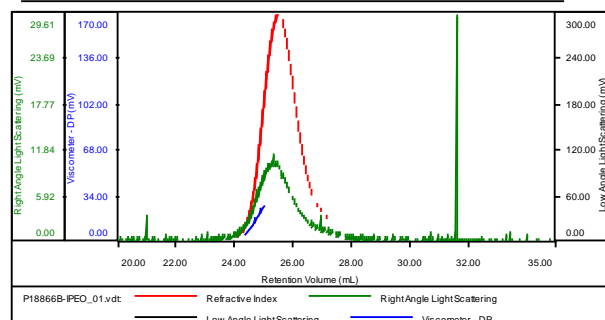
Concentration (mg/mL)	15.3194
Sample dn/dc (mL/g)	0.1250
Method File	PS80K-0903-2014-0000.vcm
Column Set	3x PL 1113-6300
Solvent	THF



Sample	MW Number Average (Da)	MW Weight Average (Da)	MW at Peak (Da)	Polydispersity	Intrinsic Viscosity (dL/g)
P18866-IP_test_01.vdt	22,768	23,335	22,621	1.025	0.4646

Sample ID: P18866B-IPEO

Concentration (mg/mL)	1.4123
Sample dn/dc (mL/g)	0.1210
Method File	PS80K-0903-2014-0000.vcm
Column Set	3x PL 1113-6300
Solvent	THF



Sample	MW Number Average (Da)	MW Weight Average (Da)	MW at Peak (Da)	Polydispersity	Intrinsic Viscosity (dL/g)
P18866B-IPEO_01.vdt	27,821	30,138	25,990	1.083	0.5668