

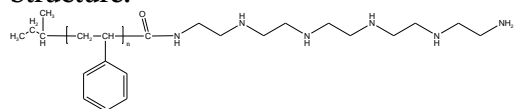
Sample Name:

Pentaethyl Hexamine Terminated Polystyrene

Sample #: **P18891-SPEHA-Dialysed polymer**

Against water

Structure:

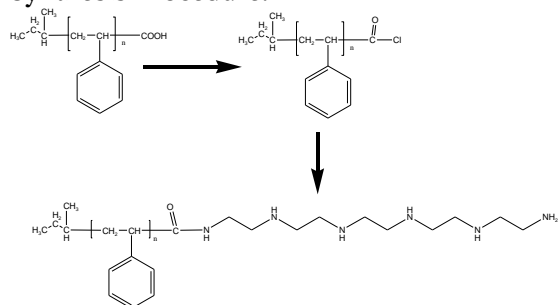


Composition:

Mn x 10 ³	PDI
2.3	1.08 (COOH) (1.3)
Functionality %	>96%
Dimer	> 5%

The dimer structure shows two polystyrene chains linked by a hexamine chain. Each chain is terminated by a pentaethyl hexamine group.

Synthesis Procedure:



Characterization:

BY GPC , HNMR and FTIR

Solubility:

Polymer is soluble in toluene, THF, CHCl_3 and can be precipitated in water and cold methanol.

H NMR:

