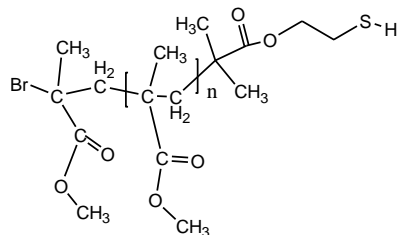


Sample Name: Thiol Terminated
Poly(methyl methacrylate)
Sample #: P19021-MMASH
Structure:

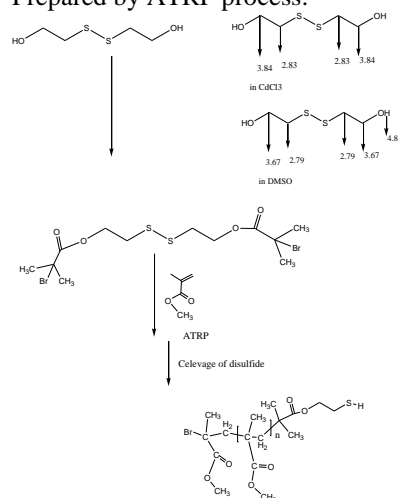


Composition:

Mn x 10 ³	PDI
7.0	1.27
Syndio:hetero:iso ratio	55:40:5

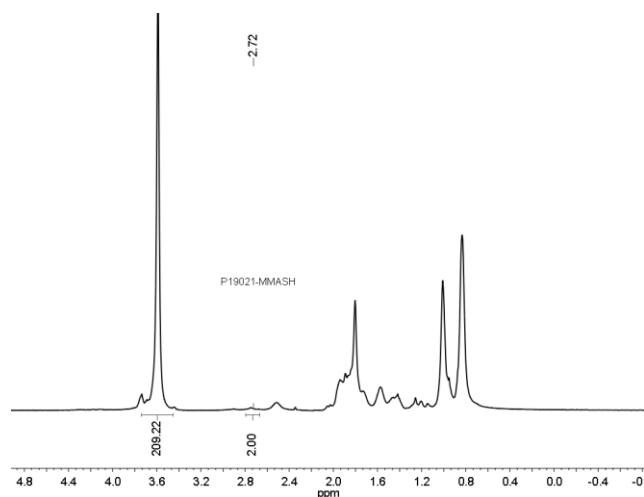
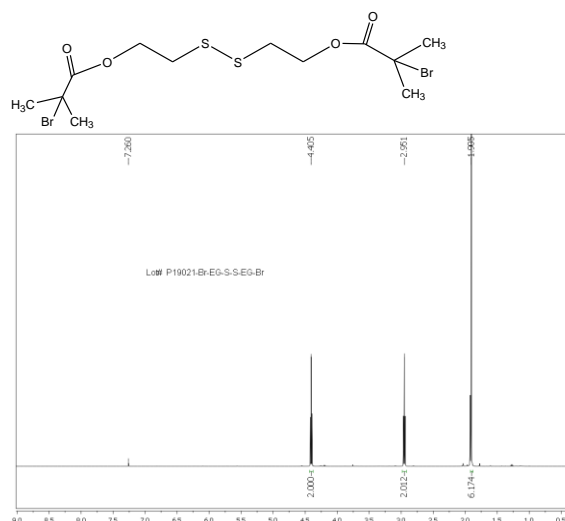
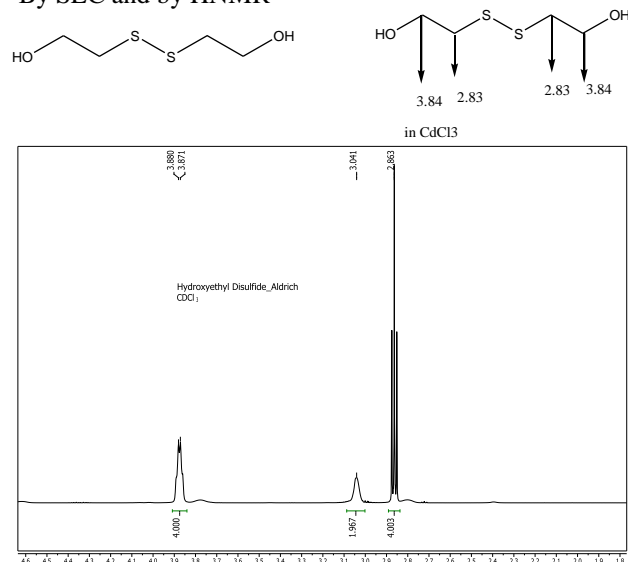
Synthesis Procedure:

Prepared by ATRP process:



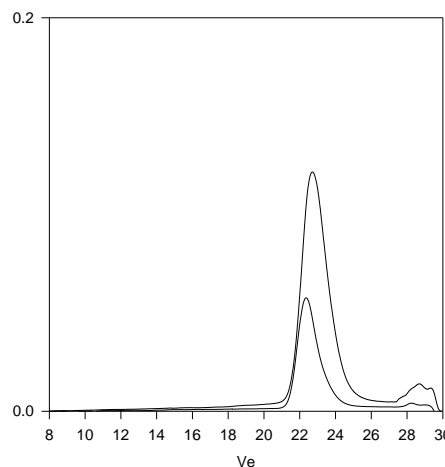
Characterization:

By SEC and by HNMR



SEC of Sample:

P19021-MMASH



Size Exclusion Chromatography of Thiol end Poly(methyl methacrylate):

1. Disulfide stage: $M_n = 14,000$, $M_w = 18,000$, $M_w/M_n = 1.27$
2. After Cleavage of disulfide link:
 $M_n 7,000$, $M_w 9,000$ $M_w/M_n 1.27$

SH Functionality > 98%