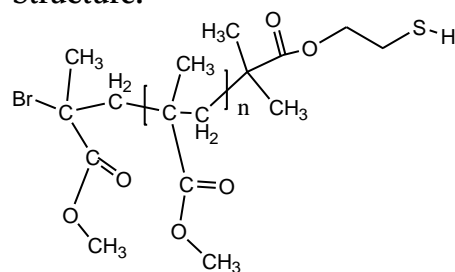


Sample Name:

Thiol Terminated Poly(methyl methacrylate)

Sample #: P19021D-MMASH

Structure:

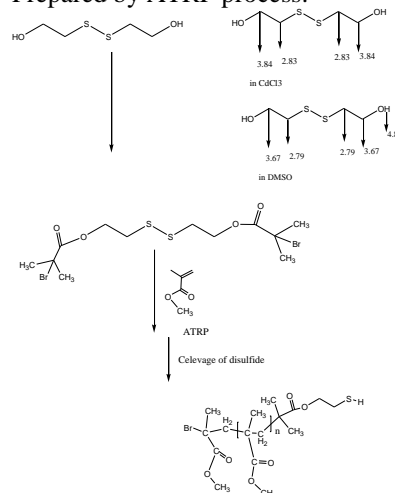


Composition:

Mwx10 ³	PDI
6.5	1.3
Syndio:hetero:iso ratio	55:40:5

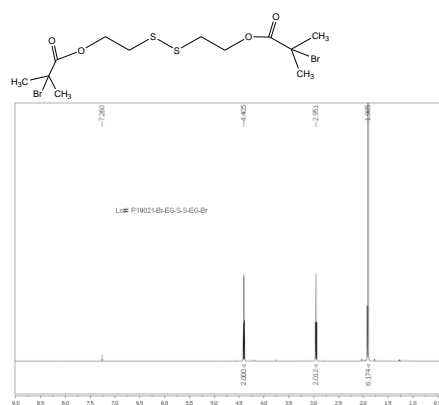
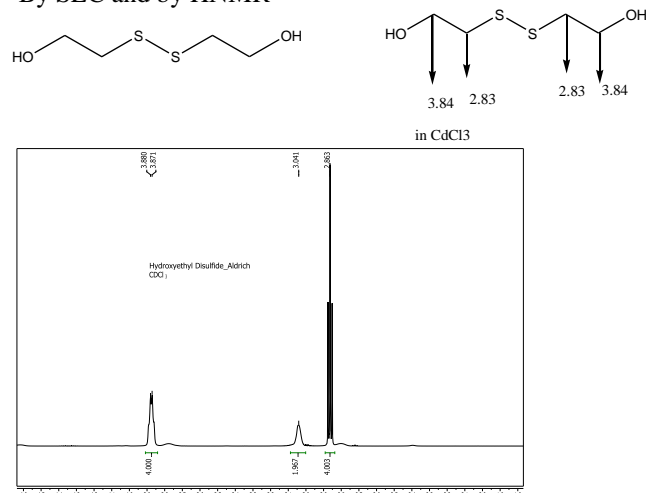
Synthesis Procedure:

Prepared by ATRP process:

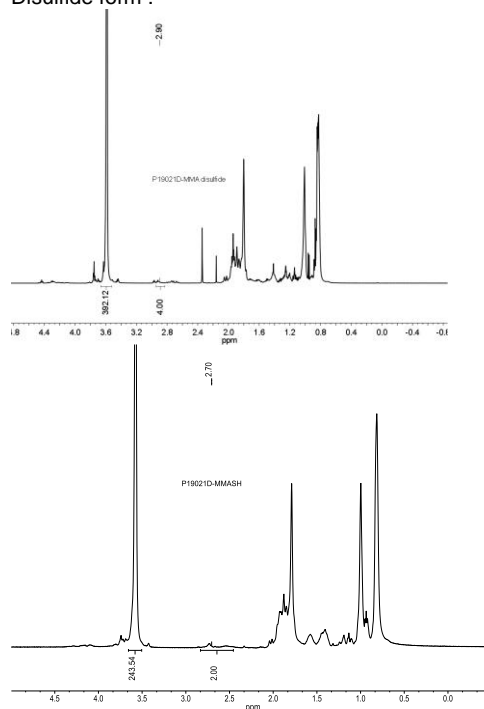


Characterization:

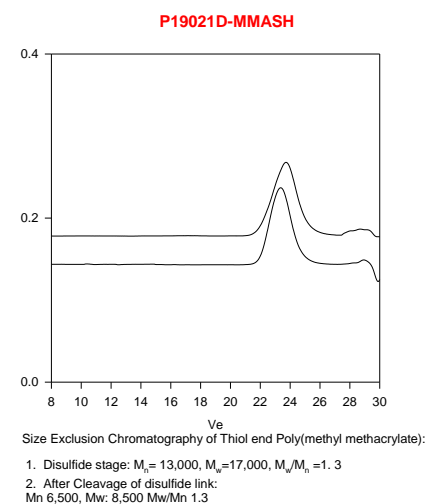
By SEC and by HNMR



Disulfide form :



SEC of Sample:



Size Exclusion Chromatography of Thiol end Poly(methyl methacrylate):

1. Disulfide stage: $M_n = 13,000$, $M_w = 17,000$, $M_w/M_n = 1.3$
2. After Cleavage of disulfide link:
 M_n 6,500, M_w : 8,500 M_w/M_n 1.3

SH Functionality>98%