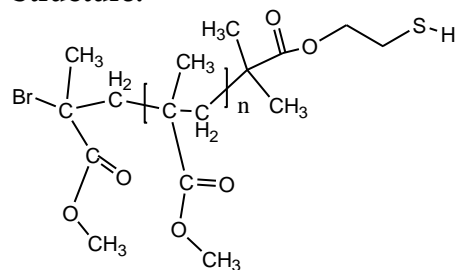
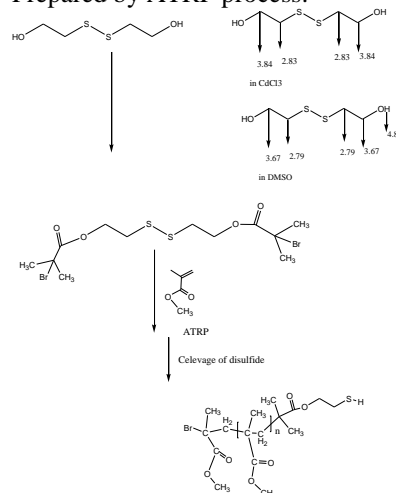


Sample Name:**Thiol Terminated Poly(methyl methacrylate)****Sample #: P19022C-MMASH****Structure:****Composition:**

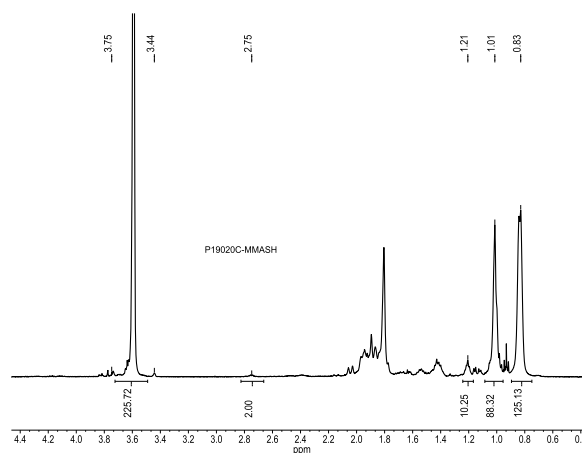
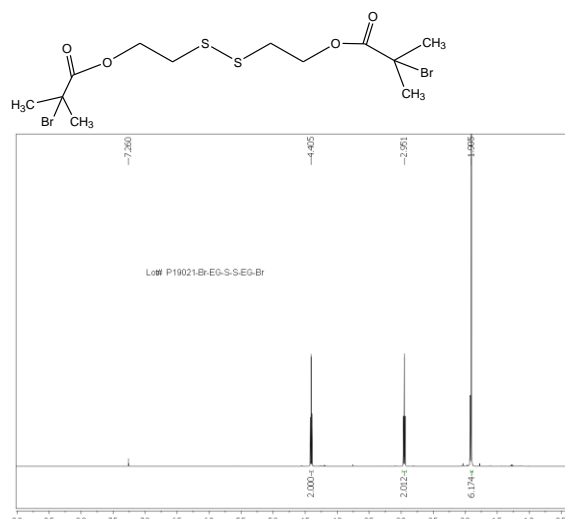
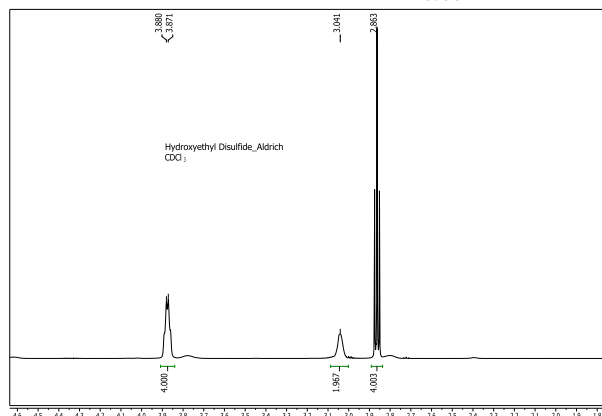
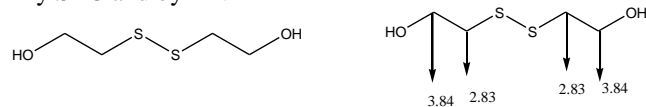
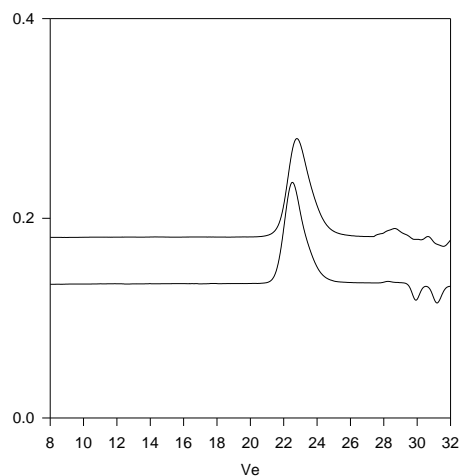
Mn x 10 ³	PDI
7.0	1.28
Syndio:hetero:iso ratio	55:40:5

Synthesis Procedure:

Prepared by ATRP process:

**Characterization:**

By SEC and by HNMR

**SEC of Sample:****P19022C-MMASH**

Size Exclusion Chromatography of Thiol end Poly(methyl methacrylate):

- Disulfide stage: $M_n = 14,000$, $M_w = 18,000$, $M_w/M_n = 1.28$
- After Cleavage of disulfide link:
 $M_n 7000$, $M_w 9,000$ $M_w/M_n 1.28$

SH Functionality >98%