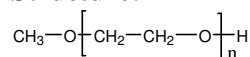


Sample Name: Poly(ethylene glycol) methyl ether

Sample #: P19628-EGOCH3OH

Structure:

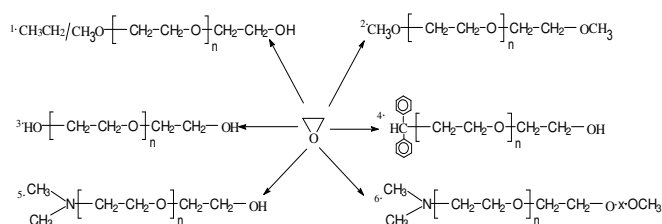


Composition:

Mn x 10 ³	PDI
0.65	1.08

Synthesis Procedure:

Polymer is obtained by living anionic polymerization and the reaction. Scheme of the polymerization is illustrated below:



Initiator System	Resulting Polymer
1 CH ₃ OCH ₂ CH(CH ₃)OK	polyethylene glycol methyl ether
2 CH ₃ OCH ₂ CH(CH ₃)OK	α, ω-term. methyl ether polyethylene glycol
3 KOCH ₂ CH ₂ OK	polyethylene glycol
4 CH(C ₅ H ₆) ₂ CK	polyethylene glycol diphenyl ether
5 (CH ₃) ₂ N-CH ₂ CH ₂ OK	methyl amino terminated PEG
6 (CH ₃) ₂ N-CH ₂ CH ₂ OK	α-methyl amino ω-methyl ether term. PEG

Characterization:

The polymer was characterized by size exclusion chromatography (SEC): Varian liquid chromatograph equipped with UV and refractive detector. SEC columns from Supelco were used with THF containing 2 vol% (Et)₃N as the eluent. The molecular weights

were determined using light scattering detector and viscosity detector. The molecular weights and the polydispersity indice were calculated.

An aqueous GPC column from Supelco(G5000 PWXL) was also used with 0.5 M acetic acid and 0.8 M NaNO₃ as the eluent. It was kept at a constant temperature of 50°C. The flow rate was 1.0 ml/min. The column was calibrated with monodisperse poly(ethylene oxide) standards. The molecular weights and the polydispersity index of polyethylene oxide were calculated by using a Visual Basic GPC software.

Purification of the obtained polymer:

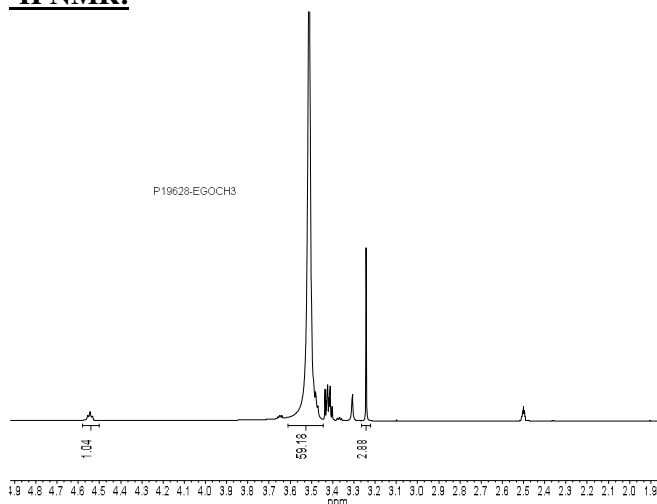
Purification of the obtained polymer was carried out rigorously as follows to ensure the removal of the catalyst side product:

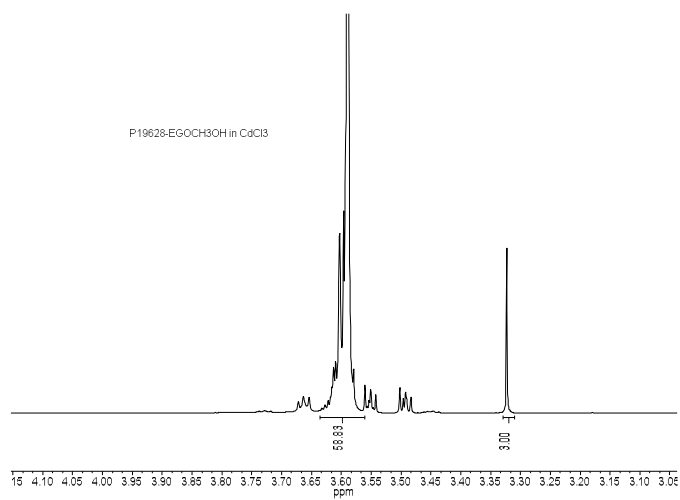
1. Dissolve the polymer in de-ionized distilled water to remove any insoluble organic catalyst side product.
2. Polymer was extracted from water with dichloromethane.
3. Polymer solution in dichloromethane was dried over anhydrous sodium sulfate.
4. Solution was filtered and then passed through a column packed with basic Al₂O₃.
5. Solution was concentrated on rota-evaporator
6. Solution was precipitated in cold diethyl ether.
7. Dried under vacuum for 48h at 38 oC.

Solubility:

Poly(ethyl glycol) is soluble in toluene, THF, water and CHCl₃. The polymer is insoluble in hexane, ether, cold isopropanol and ethanol.

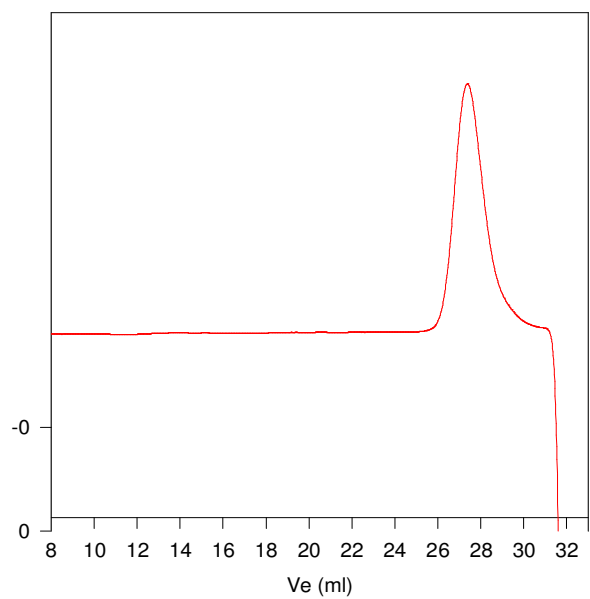
¹H NMR:





SEC elugram

P19628-EGOCH3OH



Size exclusion chromatograph of Poly(ethylene glycol)methyl ether
 $M_n=650$, $PI=1.08$