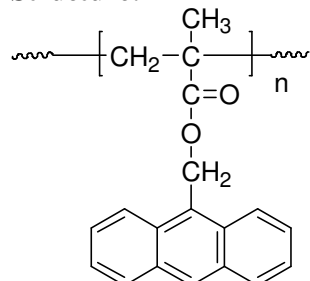


Sample Name:
Poly(9-Anthracenyl methyl methacrylate)

Sample#: P19686A-AnMMA

Structure:



Composition:

Mn x 10 ³	PDI
925.0	1.65

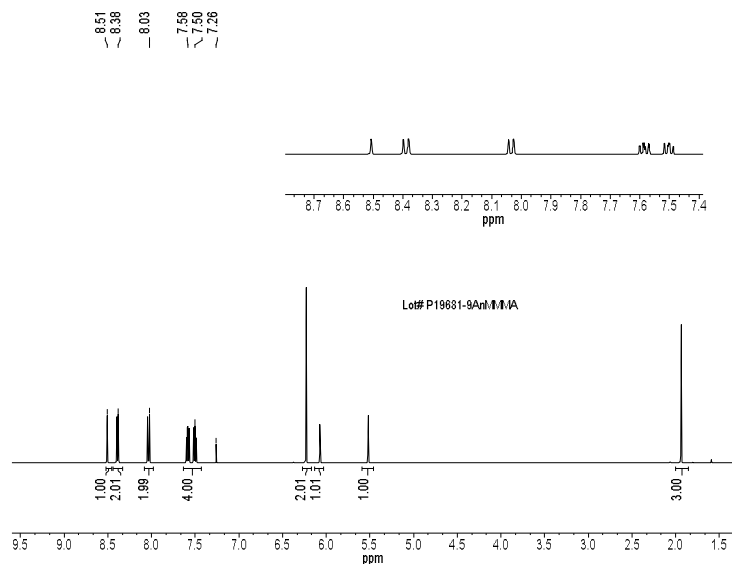
Characterization:

The polymer was characterized by SEC and ¹H NMR

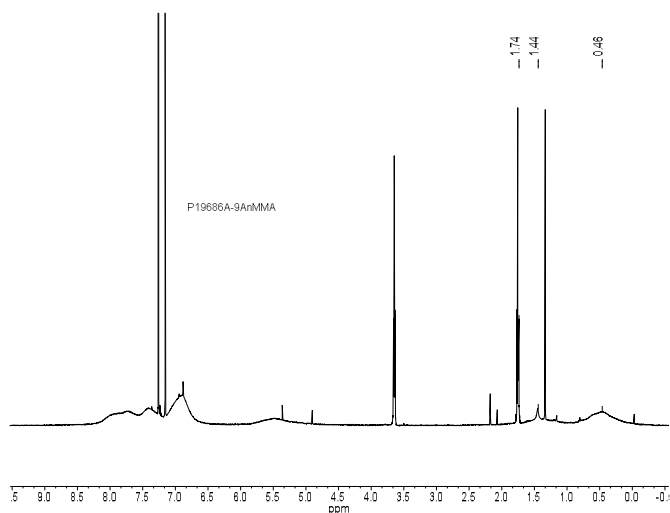
Solubility:

Polymer is soluble in THF, CHCl₃. In toluene the polymer swell. The polymer precipitates from hexanes, methanol and ethanol.

¹H NMR spectrum of monomer:



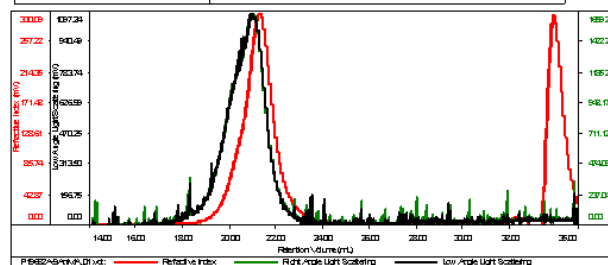
¹H NMR spectrum of polymer:



SEC elugram:

Sample ID-P19686A-9AnMMA

Concentration (mg/mL)	5.9434
Sample divide (mL/g)	0.0940
Method File	PS80K-Jan-2016-0000.vom
Column Set	3x PL-1113-6000
Solvent	THF



Sample	MW/Number Average (Da)	MW/Weight Average (Da)	MW at Peak (Da)	Polydispersity	Intrinsic Viscosity (dL/g)
-9AnMA_01.vcl	925,499	1.554 e 6	1.078 e 6	1.679	0.3437