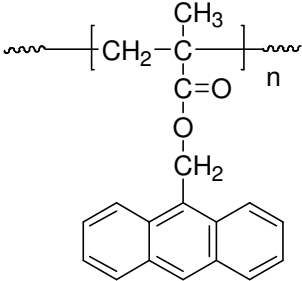


Sample Name:
Poly(9-Anthracenyl methyl methacrylate)

Sample#: P19686B-AnMMA

Structure:



Composition:

Mn x 10 ³	PDI
546.0	1.4

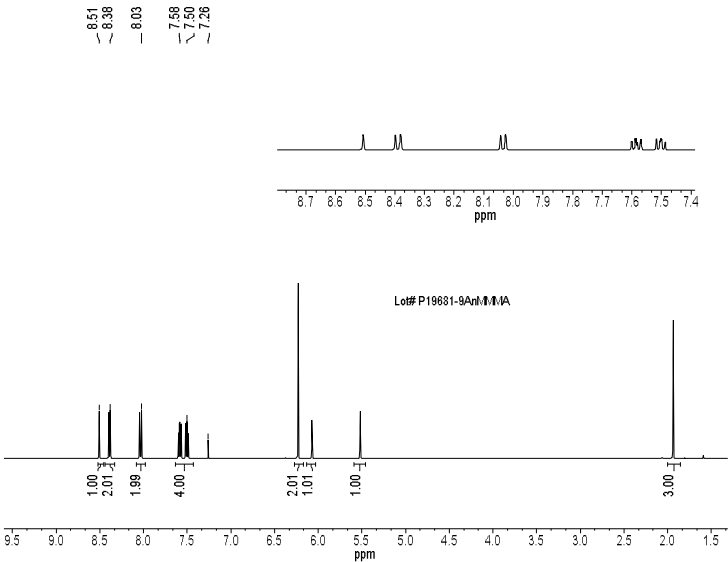
Characterization:

The polymer was characterized by SEC and ¹H NMR

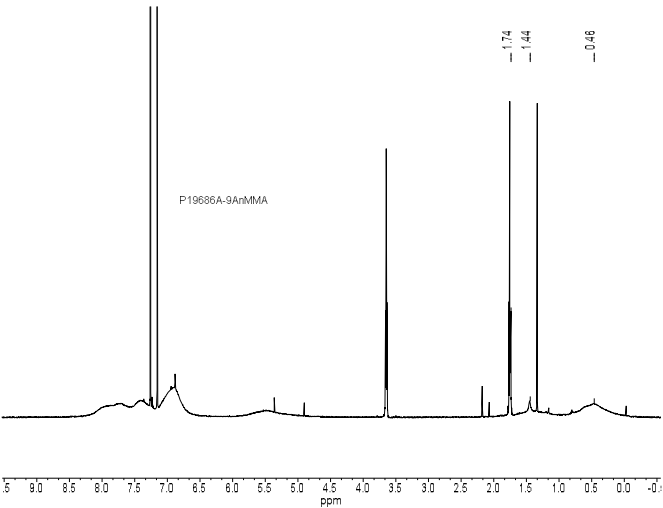
Solubility:

Polymer is soluble in THF, CHCl₃. In toluene the polymer swell. The polymer precipitates from hexanes, methanol and ethanol.

¹H NMR of monomer:

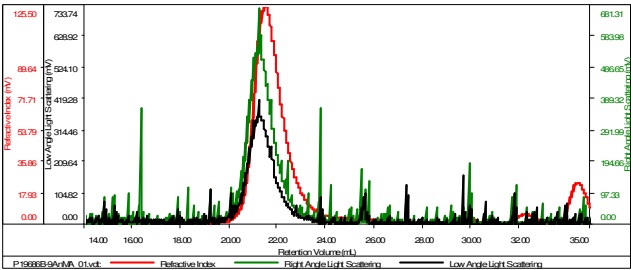


¹H NMR of polymer:



SEC elugram:

Sample ID-P19686B-9AnMMA	
Concentration (mg/mL)	2.2666
Sample dn/dc (mL/g)	0.0840
Method File	PS80K-Jan-2016-0000.vcm
Column Set	3x PL 1113-6300
Solvent	THF



Sample	MW Number Average (Da)	MW Weight Average (Da)	MW at Peak (Da)	Polydispersity	Intrinsic Viscosity (dL/g)
P19686B-9AnMMA_01.vcl	546,471	772,281	690,257	1.413	0.6411