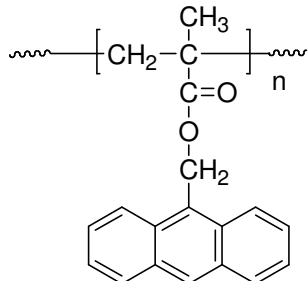


Sample Name:
Poly(9-Anthracenyl methyl methacrylate)

Sample#: **P19708-AnMMA**

Structure:



Composition:

Mn x 10 ³	PDI
22.0	1.28

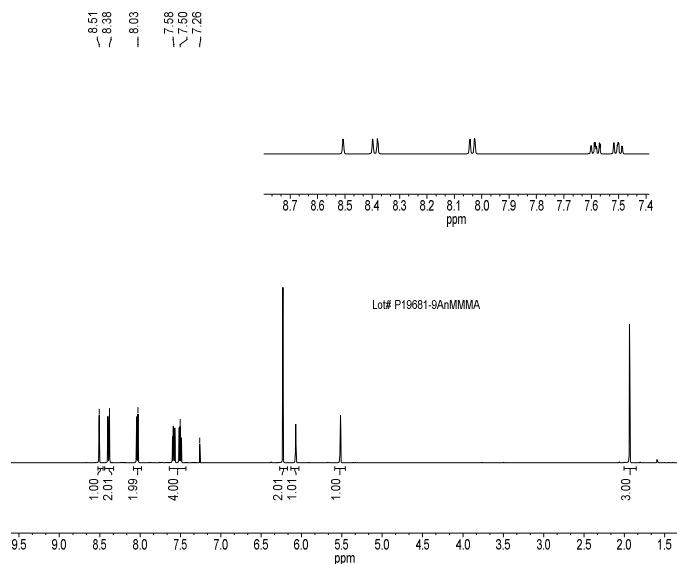
Characterization:

The polymer was characterized by SEC and ¹H NMR

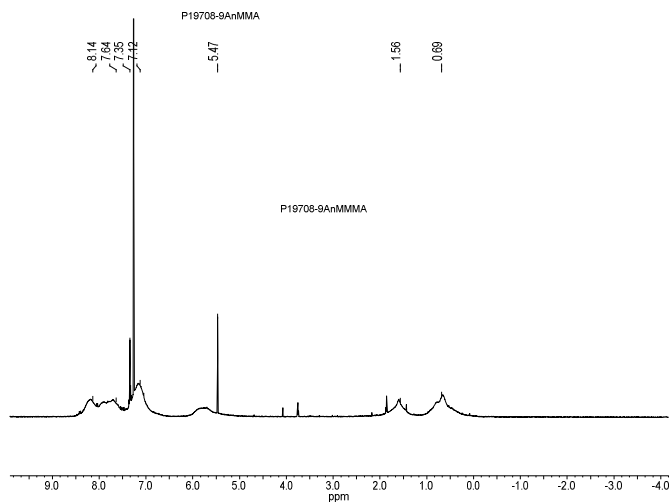
Solubility:

Polymer is soluble in THF, CHCl₃. In toluene the polymer swell. The polymer precipitates from hexanes, methanol and ethanol.

¹H NMR spectrum of monomer:



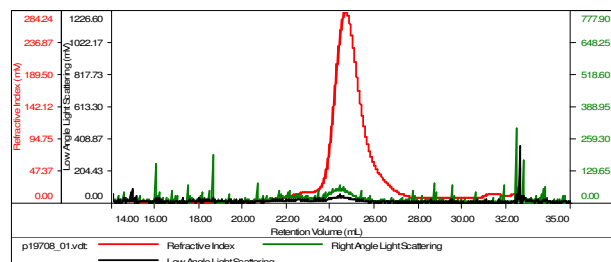
¹H NMR spectrum of polymer:



SEC elugram:

Sample ID-P19708-9AnMMA

Concentration (mg/mL)	5.3660
Sample dn/dc (mL/g)	0.0940
Method File	PS80K-Jan-2016-0000.vcm
Column Set	3x PL 1113-6300
Solvent	THF



Sample	Mn	Mw	Mw/Mn	Mz	IV
p19708_01.vct	22,278	28,634	1.285	42,059	0.0765