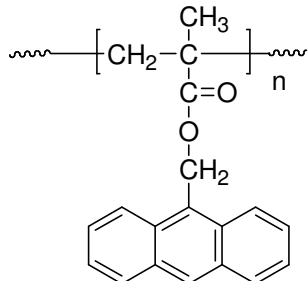


Sample Name:
Poly(9-Anthracenyl methyl methacrylate)

Sample#: **P19708A-AnMMA**

Structure:



Composition:

Mn x 10 ³	PDI
46.5	1.7

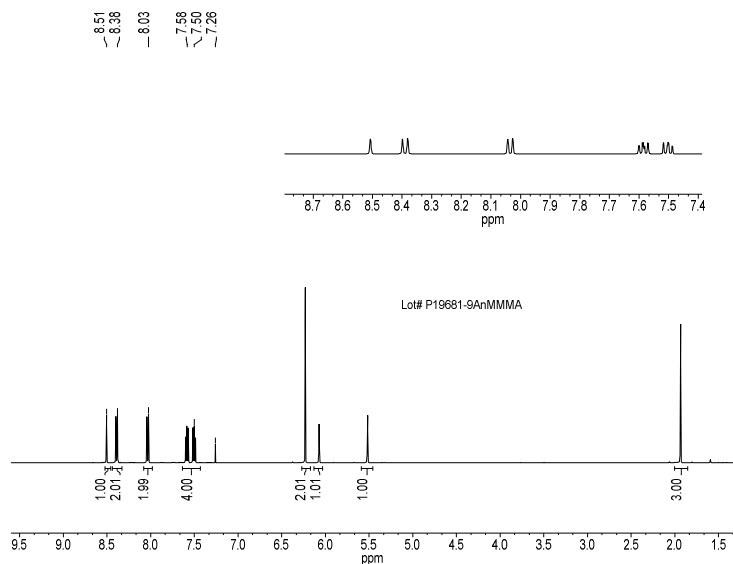
Characterization:

The polymer was characterized by SEC and ¹H NMR

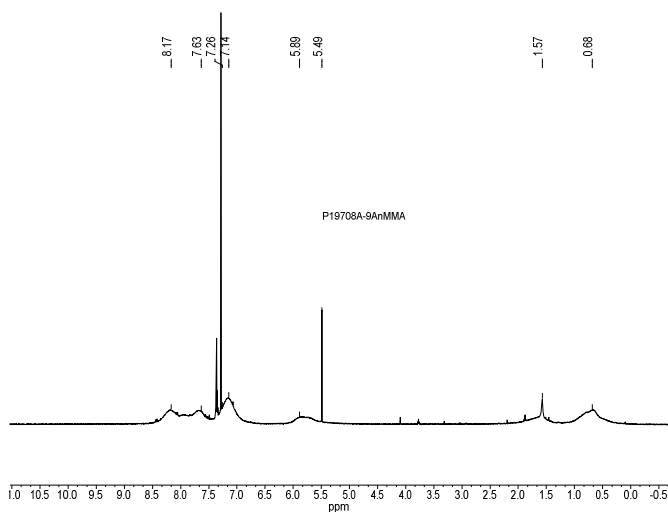
Solubility:

Polymer is soluble in THF, CHCl₃. In toluene the polymer swell. The polymer precipitates from hexanes, methanol and ethanol.

¹H NMR spectrum of monomer:



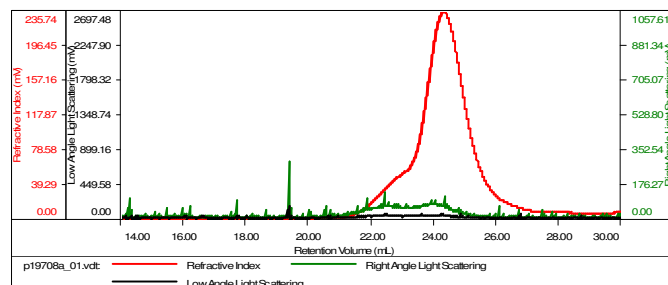
¹H NMR spectrum of polymer:



SEC elugram:

Sample ID-P19708A-9AnMMA

Concentration (mg/mL)	5.3613
Sample dn/dc (mL/g)	0.0850
Method File	PS30K-Jan-2016-0000.vcm
Column Set	3x PL 1113-6300
Solvent	THF



Sample	Mn	Mw	Mw/Mn	Mz	IV
p19708a_01.vct	46,420	81,062	1.746	348,081	0.0239