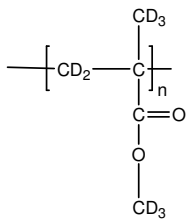


Sample Name: Poly (methyl methacrylate)-d₈

Sample #: P19737-d8PMMA

Structure:



Composition:

Mn x 10 ³	131.5
PDI	1.4
Tg	°C

Synthesis Procedure:

Deuterated poly(methyl methacrylate)-d₈ is obtained by controlled RAFT process

Characterization:

The molecular weight and polydispersity index (PDI) are obtained by size exclusion chromatography (SEC) in DMF. SEC analysis was performed on a Varian liquid chromatograph equipped with refractive and light scattering detectors. Three SEC columns from Supelco (G6000-4000-2000 HXL) were used with triple detectors from Viscotek Co.

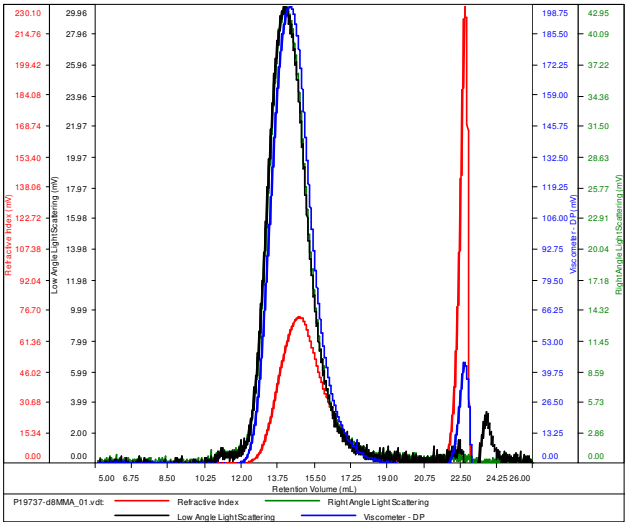
Solubility:

Deuterated poly(methyl methacrylate)-d₈ is soluble in THF, CHCl₃, toluene and dioxane. The polymer precipitates from hexanes, methanol and ethanol.

SEC elugram of Homopolymer:

P19737-D8MMA

Conc (mg/mL)	10.1401
dn/dc (mL/g)	0.0650
Method	PS80k-May-25-2016-0000.vcm
Solvent	DMF w/0.023M LiBr
Column	PSS



Sample	Mn	Mw	Mp	Mw/Mn	IV
P19737-d8MMA_01.vdt	131,326	183,420	166,709	1.397	0.4809