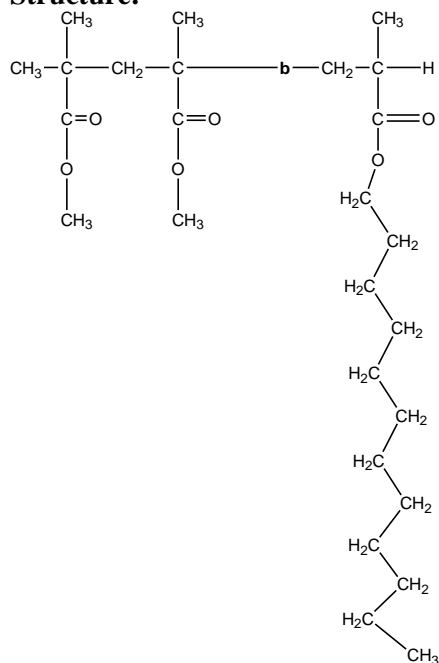


Sample Name:

**Poly( Methyl methacrylate-b-Lauryl methacrylate)**

Sample #: **P19822-MMALMA**

**Structure:**



**Composition:**

| $M_n \times 10^3$<br>MMA-b-LMA | PDI  |
|--------------------------------|------|
| 1.0-3.5                        | 1.10 |

**Synthesis Procedure:**

The polymer was synthesized by GTP process. Polymer was precipitated into methanol/water.

**Characterization:**

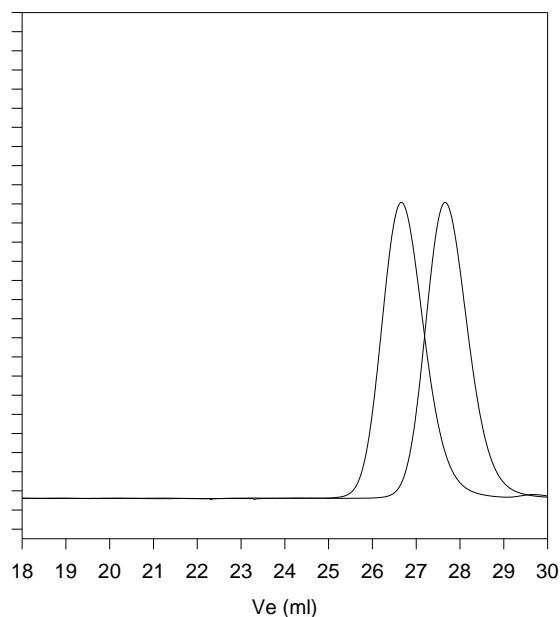
The polymer was characterized by SEC analysis.

**Solubility:**

The block copolymer is soluble in THF and  $\text{CHCl}_3$ .

**SEC of the block copolymer:**

**P19822-MMALMA**



Size exclusion chromatography of polymer:

Poly(MMA),  $M_n=1,000$ ,  $M_w=1,200$ ,  $PI=1.10$

MMA-b-LMA:  $M_n: 1,000b-3,500$   $M_w/M_n : 1.10$