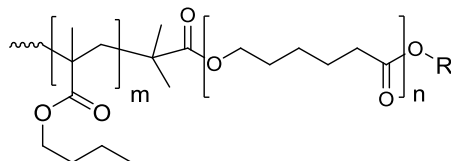
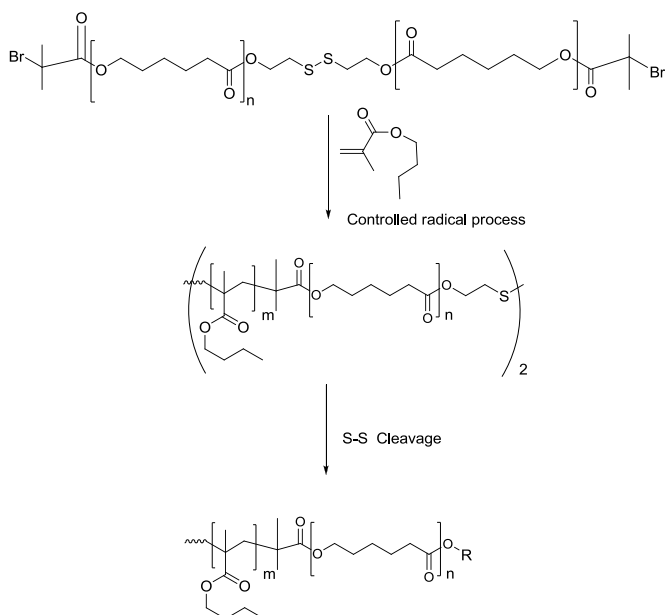
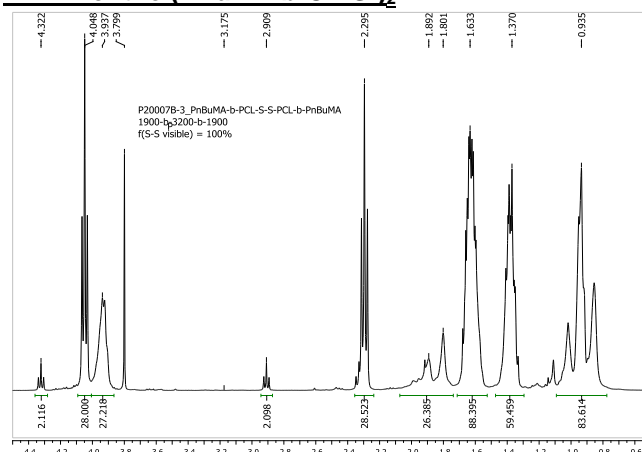
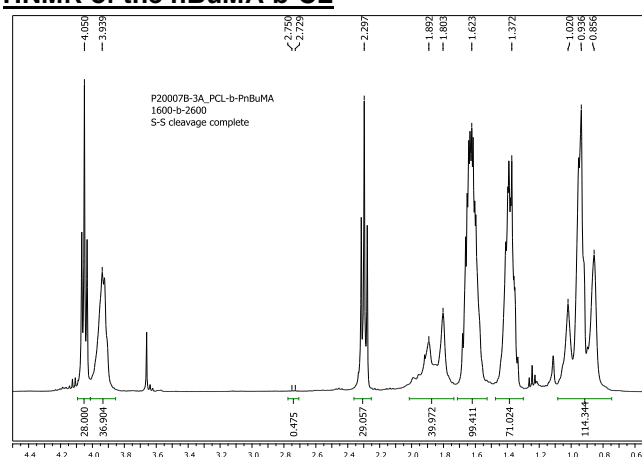
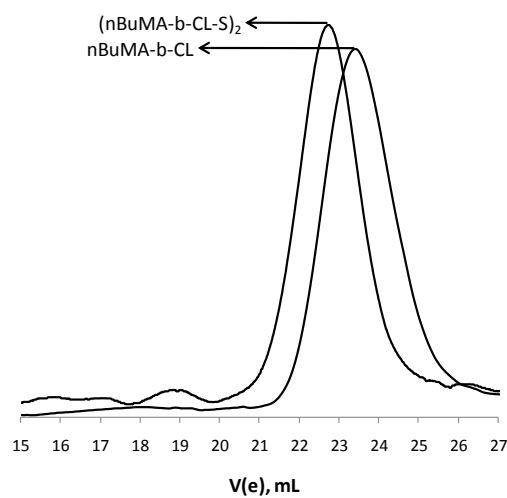


Sample Name:

Poly(n-butyl methacrylate-b-ε-caprolactone)

Sample #: P20007B3A-nBuMACL**Structure:****Composition:**

$M_n \times 10^3$ nBuMA-b-CL	PDI
2.6-1.6	1.4
May contain ~20% of residual SH functionality	

Synthesis Procedure:**HNMR of the (nBuMA-b-CL-S)₂****HNMR of the nBuMA-b-CL****SEC of the block copolymer:****P20007B3A-nBuMACL**Before cleavage, $M_w / M_n = 1.4$ After cleavage, $M_w / M_n = 1.4$