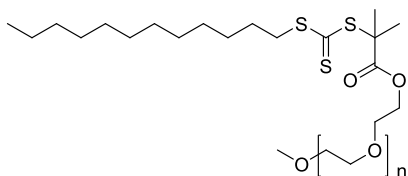


Sample Name: Poly(ethylene oxide) methyl ether, ω -RAFT-terminated

Sample #: P20049-mPEG-RAFT

Structure:



Composition:

$M_n \times 10^3$ MeO-PEO-RAFT2	PDI
2.4 (NMR)	1.1 (SEC)
RAFT functionality: $\geq 70\%$ (NMR)	

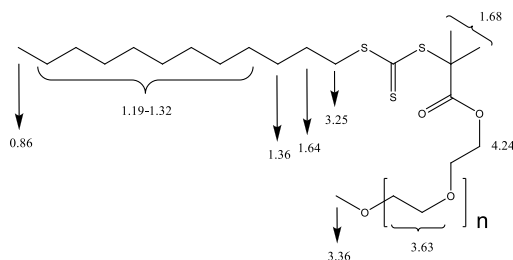
Solubility:

Poly(ethylene oxide) is soluble in toluene, CHCl_3 , Acetone, THF, water. Insoluble in ether, hexane. Precipitated from DCM or CHCl_3 into ether.

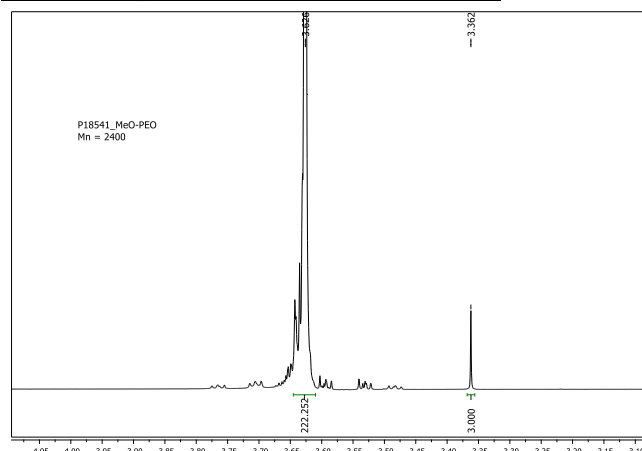
Characterization:

PEO bearing RAFT initiating site was analyzed by size exclusion chromatography (SEC) to obtain the polydispersity index (PDI). M_n and percentage of RAFT functionality was estimated from NMR by comparing the integrals ratio of the peaks at 3.36 and 3.63 ppm, and 3.36 and 4.24 ppm, respectively.

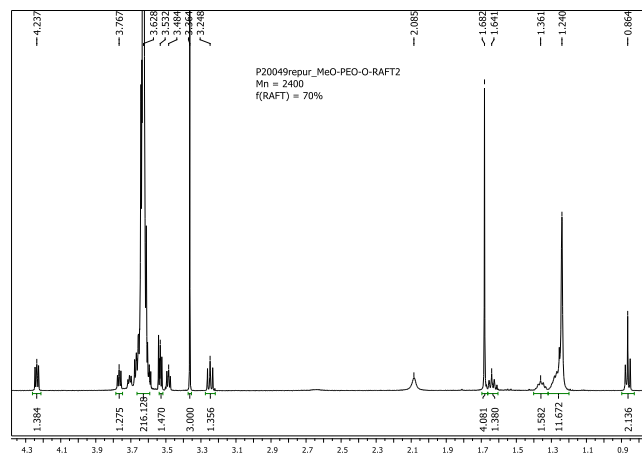
Chemical shifts assignments



^1H -NMR spectrum of the Initial PEO:



^1H NMR spectrum PEO with RAFT2 End group



SEC profile of the polymer:

P20049-mPEG-RAFT

