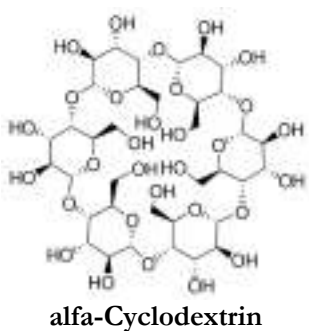
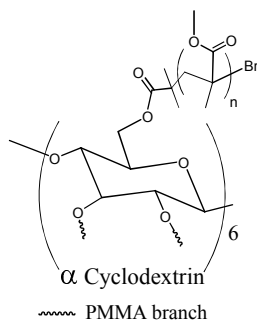
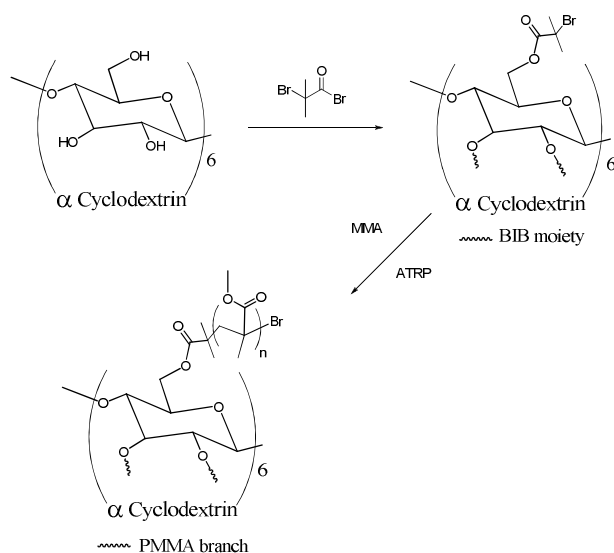


**Sample Name: P20146-6MMA**  
**Star like Poly(methyl methacrylate) bearing  $\alpha$ -Cyclodextrin as a core**  
**Average number of arms: 6**



Mn x 10 <sup>3</sup> (total)	PDI
43.1 (total)	1.53
7.5 (branch)	1.31

**Synthesis Procedure:**  
 By ATRP Process:



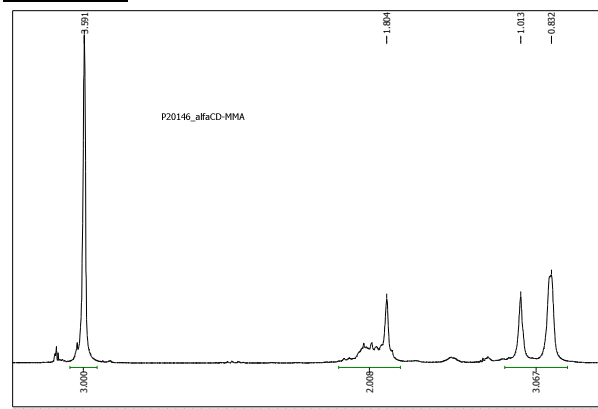
Scheme 1.

**Characterization:**

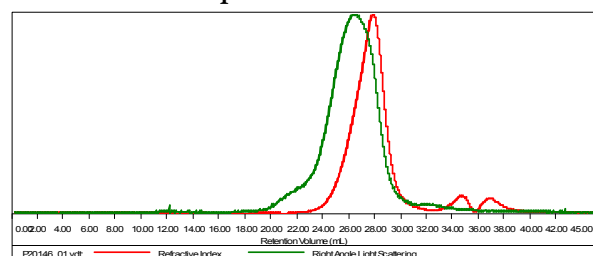
**Molecular Weight:** Size exclusion chromatography (SEC): The absolute molecular weight of the star-like polymer was determined by light scattering detector-Viscotek 270 model.

The molecular weight of each arm was determined after a complete hydrolysis of the product in basic conditions.

**<sup>1</sup>H NMR:**

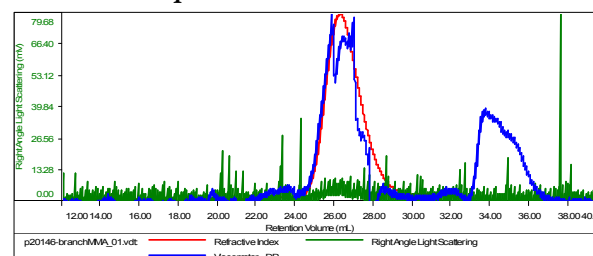


**Sample P20146-6MMA**



Sample	MW Number Average (Da)	MW Weight Average (Da)	MW at Peak (Da)	Polydispersity	Intrinsic Viscosity (dL/g)
P20146_01.vdt	43,082	65,928	34,498	1.530	0.0000

**Sample P20146-6MMA branch**



Sample	MW Number Average (Da)	MW Weight Average (Da)	MW at Peak (Da)	Polydispersity	Intrinsic Viscosity (dL/g)
p20146-branchMMA_01.vdt	7,516	9,885	7,439	1.315	0.0678